

Building Committee



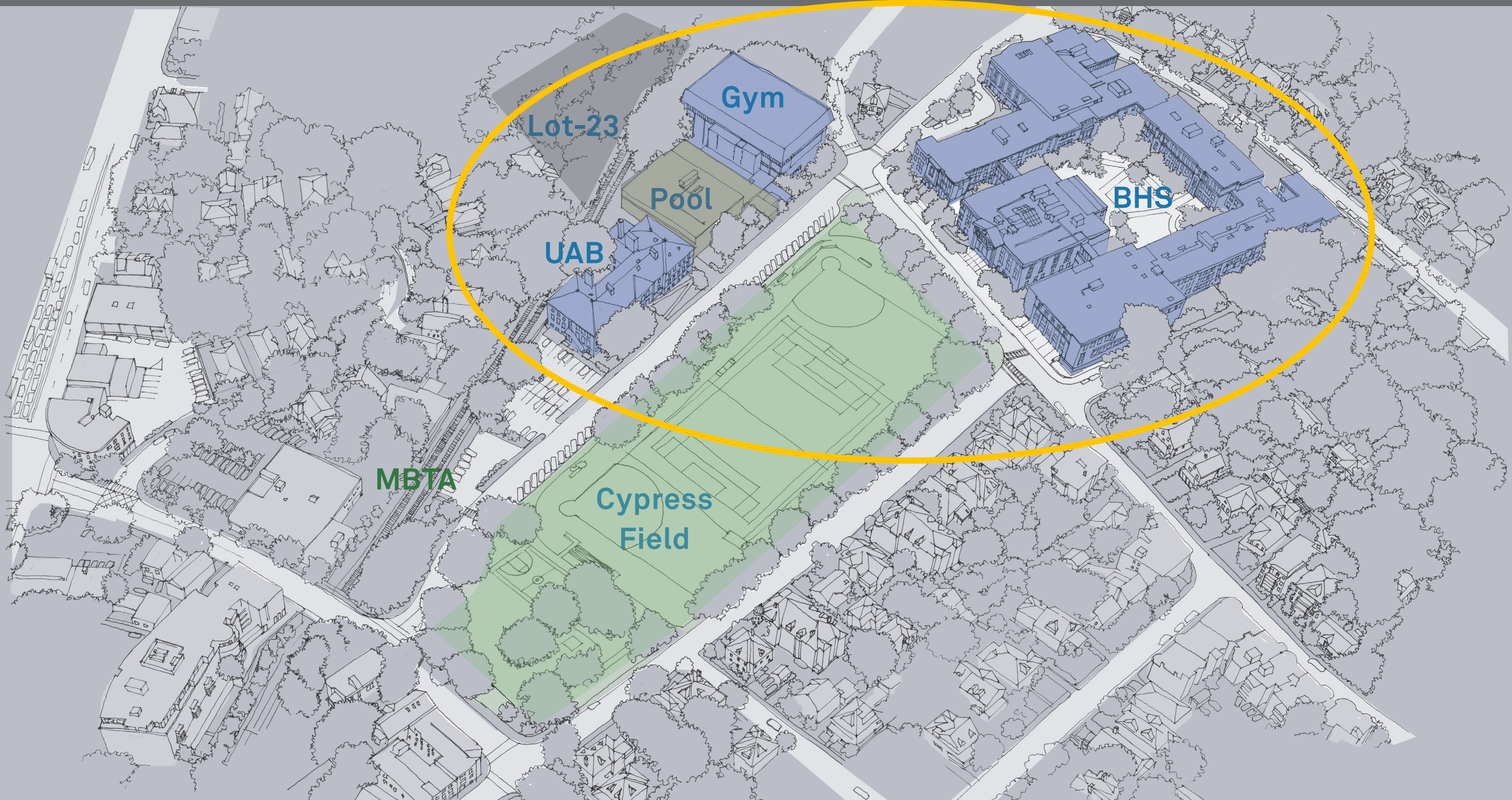
Brookline High School
Campus Expansion
Review of Design Alternatives
Feasibility Study

MARCH 13, 2017

HMFH ARCHITECTS

130 Bishop Allen Drive, Cambridge, MA 02139 617 492 2200 hmfh.com

PRELIMINARY CAMPUS MASSING OPTIONS



GUIDING STATEMENTS

2700 ENROLLMENT






BHS currently accommodates 2,000 students satisfactorily. Therefore, take only those measures required to accommodate the growth to 2,700 plus improvements to the Science Department facilities.

MA HS STANDARDS

The BHS expansion would be planned to generally conform to the standards currently used for other Massachusetts High Schools. Most other communities partner with the MSBA for funding, and are largely based on MSBA guidelines

BHS EDUCATION PLAN

The BHS expansion would be planned to accommodate the goals set forth by the BHS community during the visioning sessions from the past 2 years and as set out in the Education Plan

-  Extent of Demolition
-  Light Renovations at Existing to Remain
-  Code Renovations
-  Program Renovations
-  New Construction

EXTENT OF INTERVENTION

ENROLLMENT ACCOMMODATION

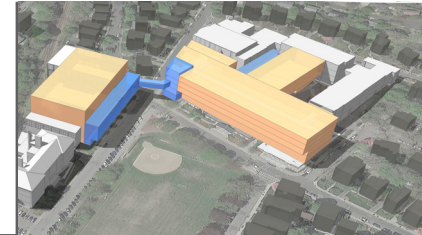
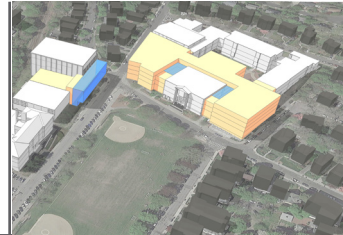
MA HS STANDARDS

EDUCATION PLAN

OPTION 1

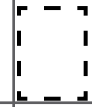
OPTION 2

OPTION 3



BHS

Extent of Demolition



Light Renovations



Code Renovations



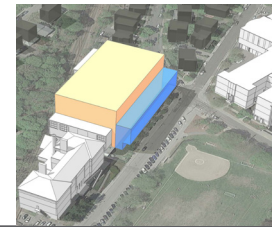
Program Renovations



New Construction



Tappan Gym

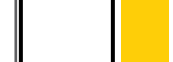


Renovations / New



UAB

Renovations / New



OTHER (not shown)

Parking, Cypress Park, Field, and Playground

ANALYSIS OF PRELIMINARY MASSING OPTIONS

ENROLLMENT
ACCOMMODATION

MA HS
STANDARDS

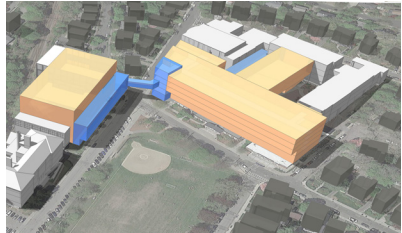
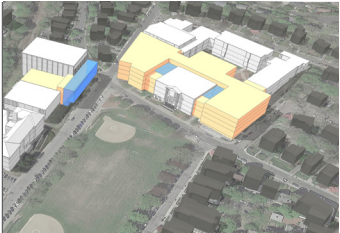
EDUCATION
PLAN

OPTION 1

OPTION 2

OPTION 3

- Advantageous
- Adequate
- Less Advantageous



Program
Accommodation



Phasing/ Schedule/
Swing-space



Constructibility
Operations



Circulation / Adjacencies



Systems Upgrades



Sustainability / LEED



Construction Costs



OTHER (not shown)

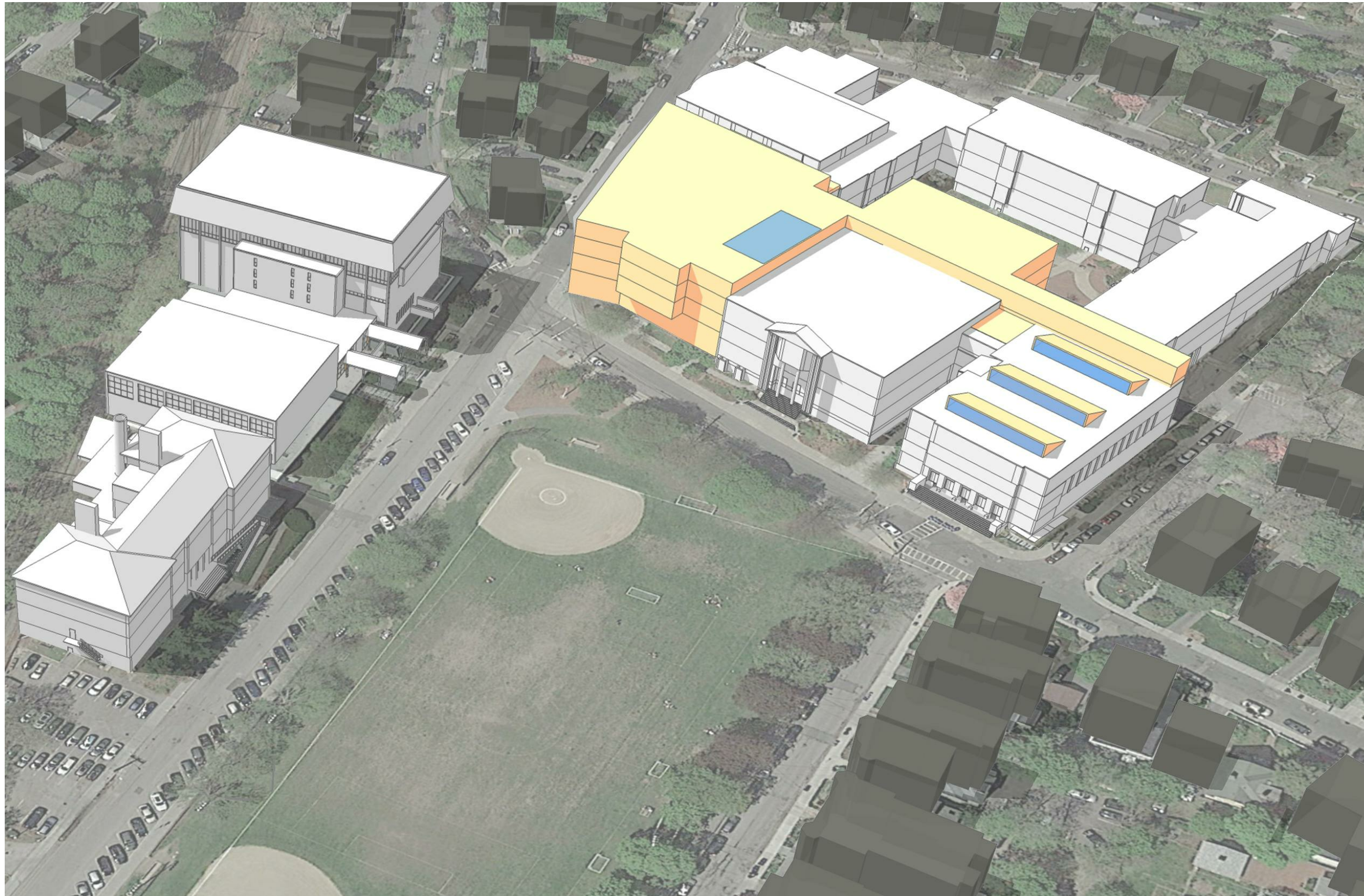
Cypress Park, Field, and Playground / Parking

Brookline High School - Feasibility Study
Preliminary Options - Itemized Program Components

HMFH Architects

7-Mar-17

BHS	ENROLLMENT ACCOMMODATION OPTION 1	STATE HS STANDARDS OPTION 2	BHS ED. PLAN OPTION 3
Reno./New Classrooms	92 Classrooms	95 Classrooms	98 Classrooms
Renovated Undersized Classrooms	29	5	0
Renovated Classrooms	42	45	46
New Classrooms	21	45	52
New Science Class-Labs	24 Science	24 Science	24 Science
Special Ed. OT & PT	●	●	●
Collaborative Learning Commons	●	●●	●●●
(1) New Art Studio	●	●	●
(1) Chorus Music Studio	●	●	●
New Black Box Theater		●	●
New White Box Theater	●	●	●
Third Dance Studio		●	●
New 400-Seat Theater			●
New Career Tech. Culinary Arts	●	●	●
Expanded Cafeteria	●	●	
New Cafeteria			●
Library Relocate/Renovation	●	●	
New Library		●	●
Schluntz Gym Remains	●		
Tappan Gym Moderate Expansion & Renovation		●	
Tappan Gym Field House Expansion & Renovation			●●
Underground Parking @ New BHS Basement			● Optional
Cypress Field Underground Parking	Optional	Optional	Optional



Enrollment Accommodation - Option 1 - Massing

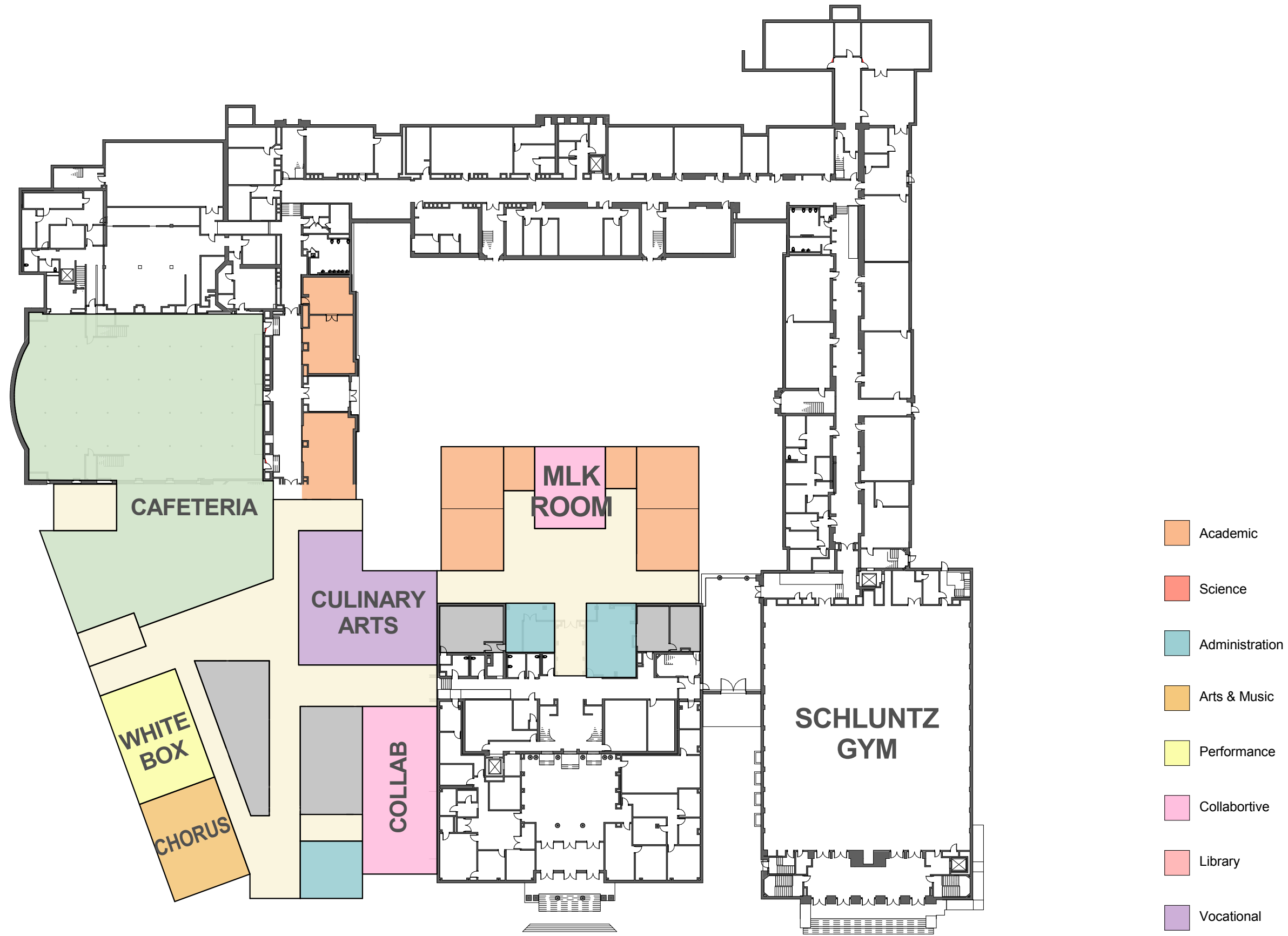
Brookline High School Expansion Feasibility Study

Brookline, MA

13 March 2017

HM
FH

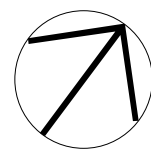
HMFH ARCHITECTS



Enrollment Accomodation - Option 1 - First Floor - Program

Brookline High School Expansion Feasibility Study

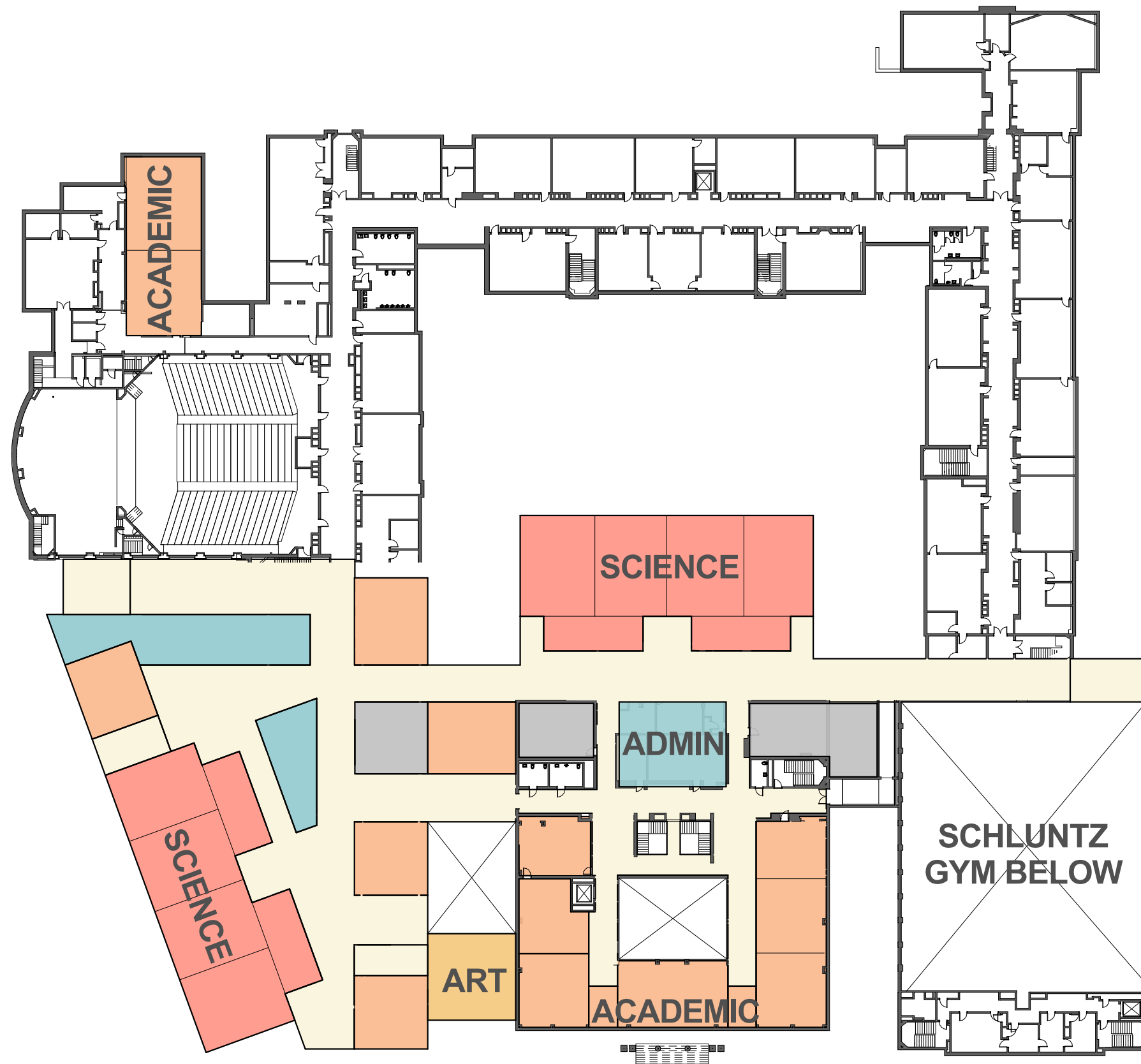
Brookline, MA
13 March 2017



0' 25' 50' 100'



HMFH ARCHITECTS

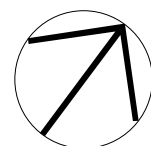


- Academic
- Science
- Administration
- Arts & Music
- Performance
- Collaborative
- Library
- Vocational

Enrollment Accomodation - Option 1 - Second Floor - Program

Brookline High School Expansion Feasibility Study

Brookline, MA
13 March 2017



0' 25' 50' 100'



HMFH ARCHITECTS

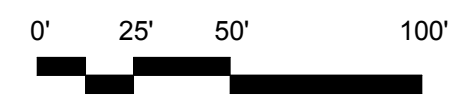
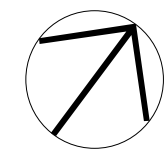


- Academic
- Science
- Administration
- Arts & Music
- Performance
- Collaborative
- Library
- Vocational

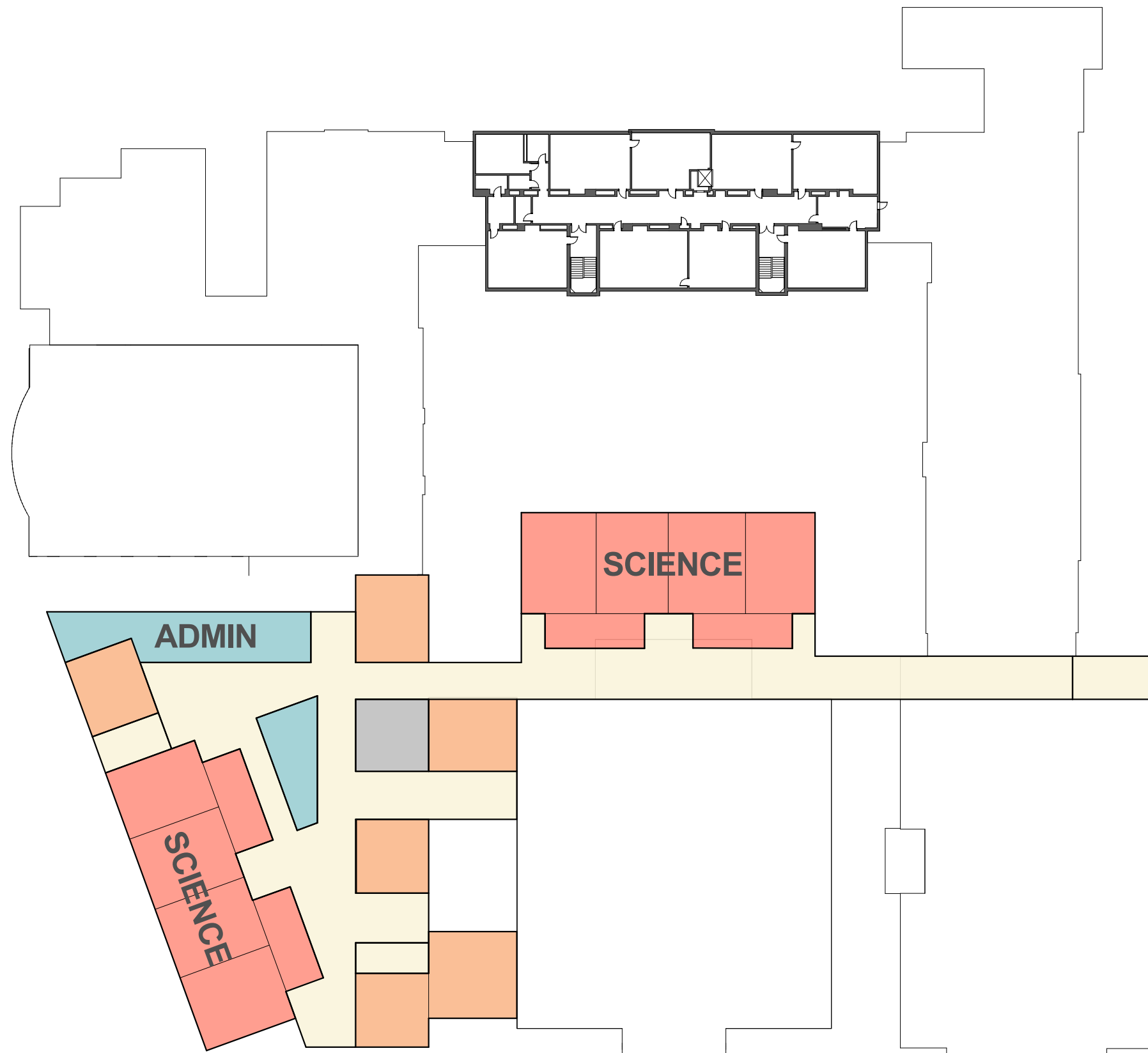
Enrollment Accomodation - Option 1 - Third Floor - Program

Brookline High School Expansion Feasibility Study

Brookline, MA
13 March 2017



HMFH ARCHITECTS

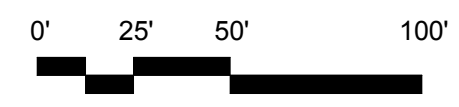
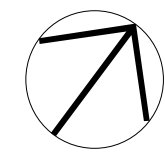


- Academic
- Science
- Administration
- Arts & Music
- Performance
- Collaborative
- Library
- Vocational

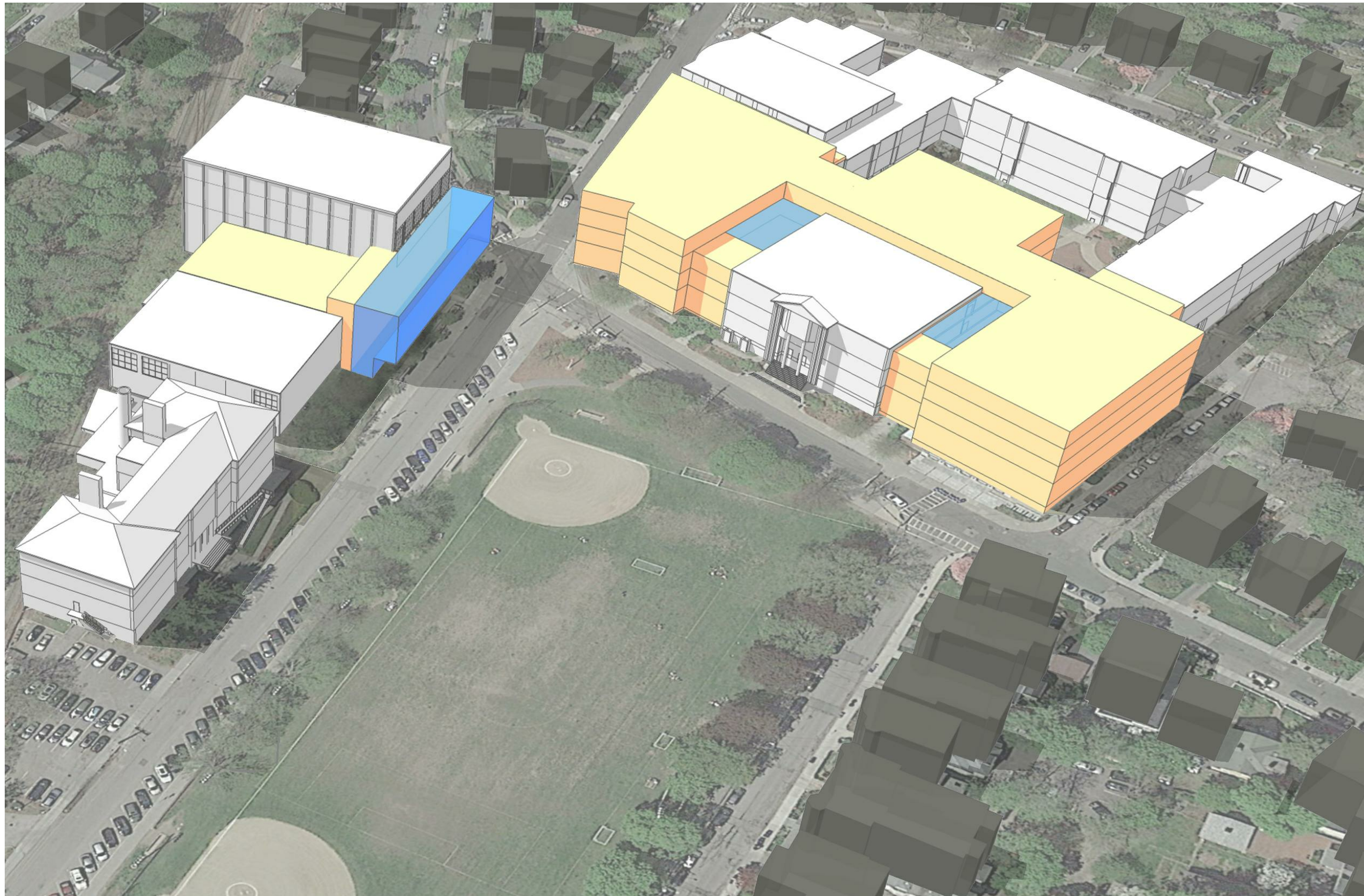
Enrollment Accomodation - Option 1 - Fourth Floor - Program

Brookline High School Expansion Feasibility Study

Brookline, MA
13 March 2017



HMFH ARCHITECTS

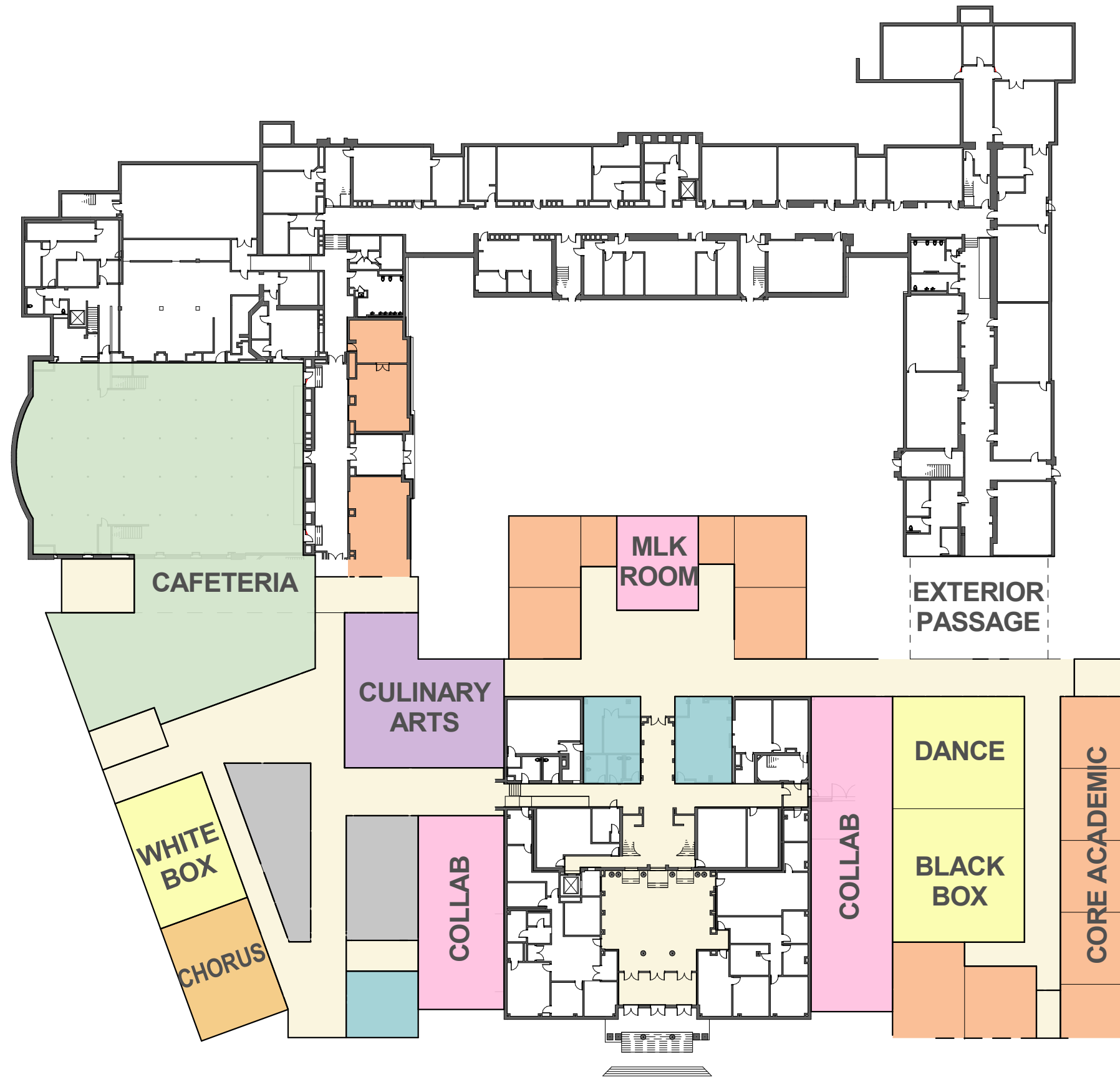


MA HS Standards - Option 2 - Massing
Brookline High School Expansion Feasibility Study

Brookline, MA
13 March 2017



HMFH ARCHITECTS

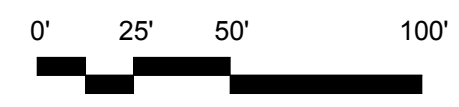
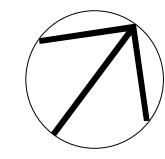


- Academic
- Science
- Administration
- Arts & Music
- Performance
- Collaborative
- Library
- Vocational

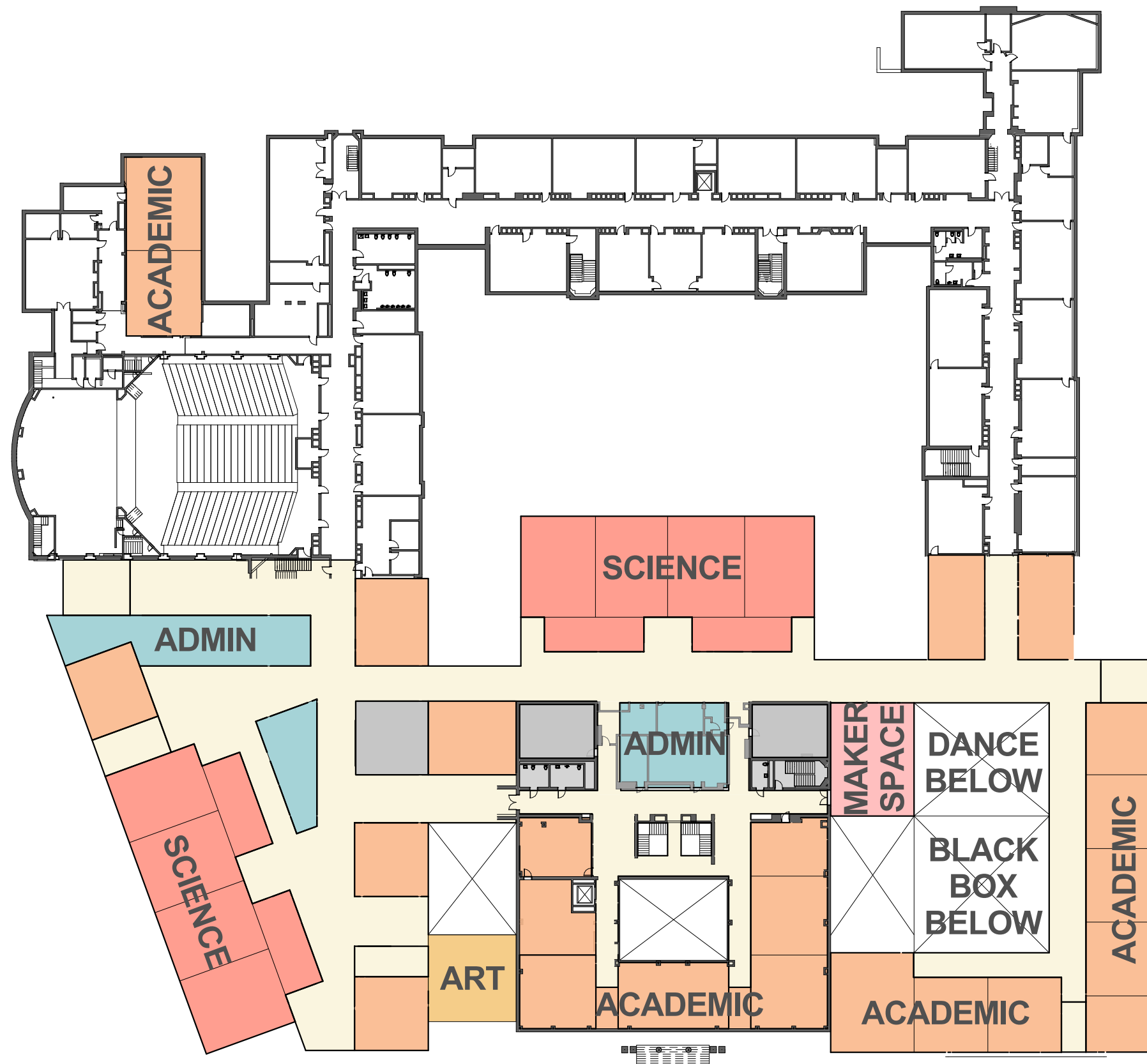
MA HS Standards - Option 2 - First Floor - Program

Brookline High School Expansion Feasibility Study

Brookline, MA
13 March 2017



HMFH ARCHITECTS

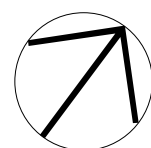


- Academic
- Science
- Administration
- Arts & Music
- Performance
- Collaborative
- Library
- Vocational

MA HS Standards - Option 2 - Second Floor - Program

Brookline High School Expansion Feasibility Study

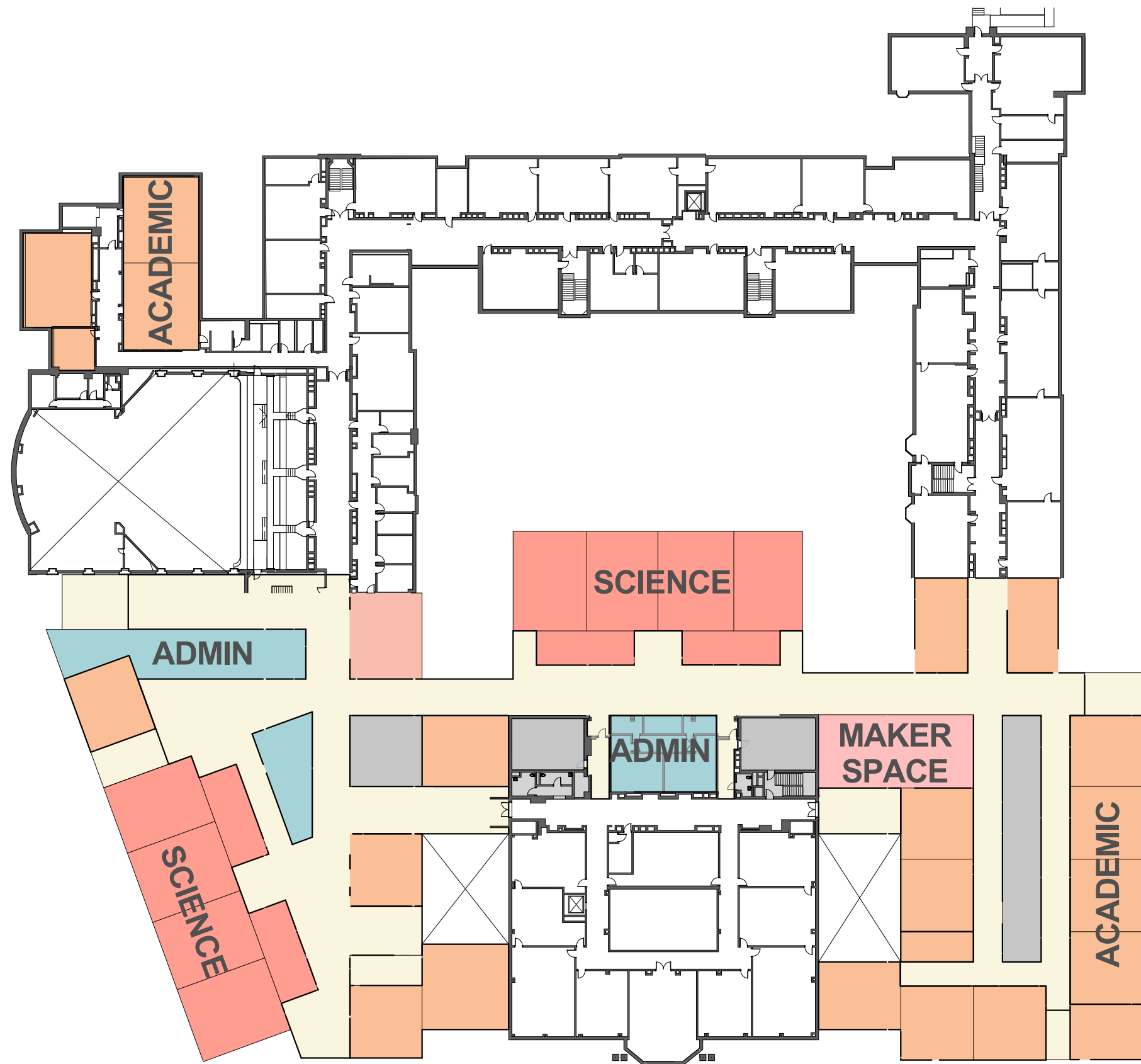
Brookline, MA
13 March 2017



0' 25' 50' 100'

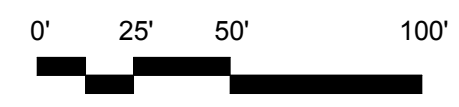
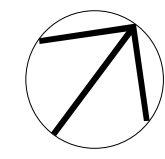


HMFH ARCHITECTS

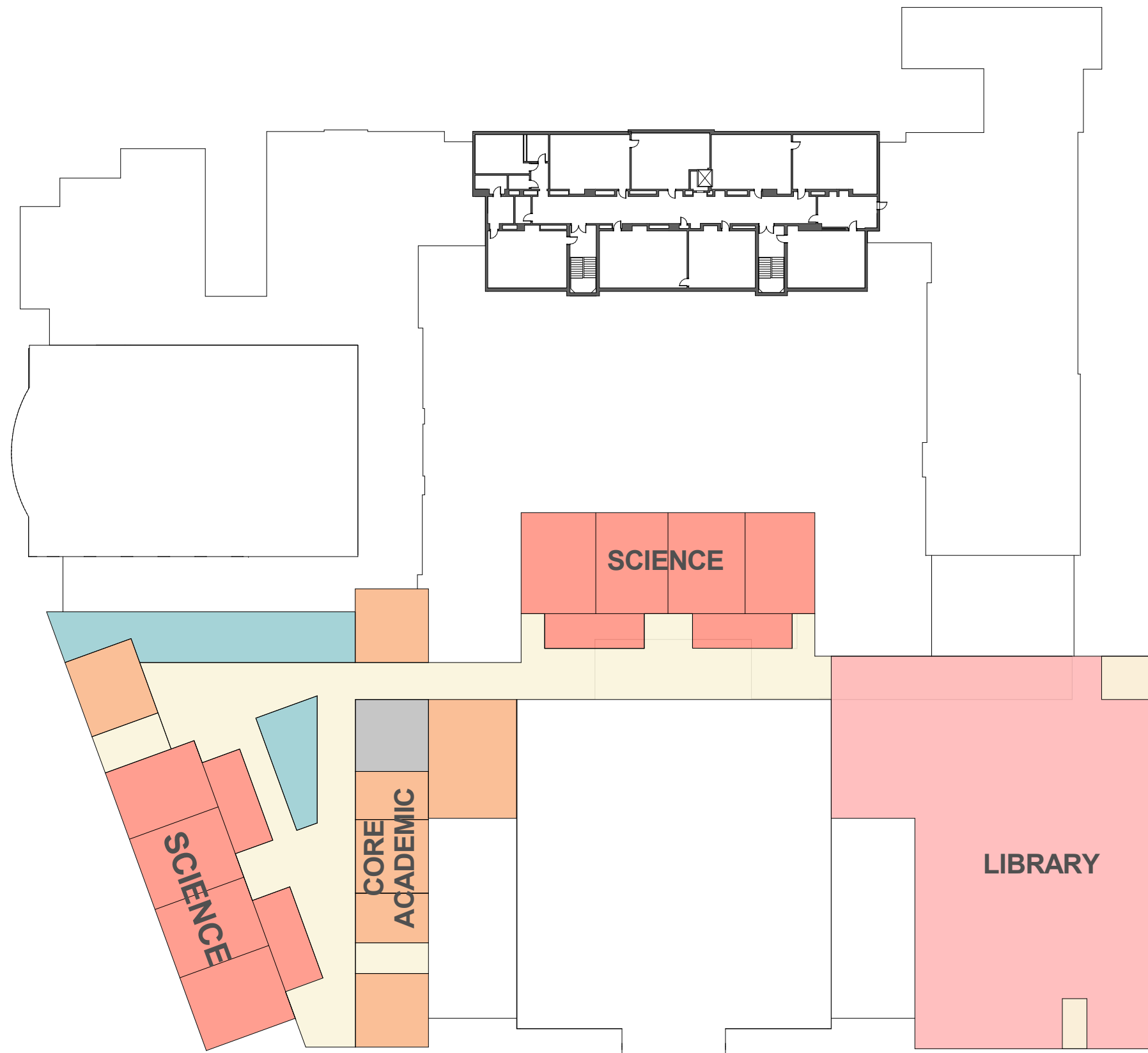


- Academic
- Science
- Administration
- Arts & Music
- Performance
- Collaborative
- Library
- Vocational

MA HS Standards - Option 2 - Third Floor - Program
 Brookline High School Expansion Feasibility Study
 Brookline, MA
 13 March 2017



HMFH ARCHITECTS

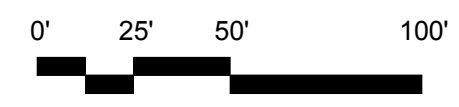
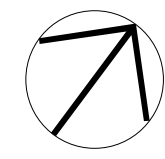


- Academic
- Science
- Administration
- Arts & Music
- Performance
- Collaborative
- Library
- Vocational

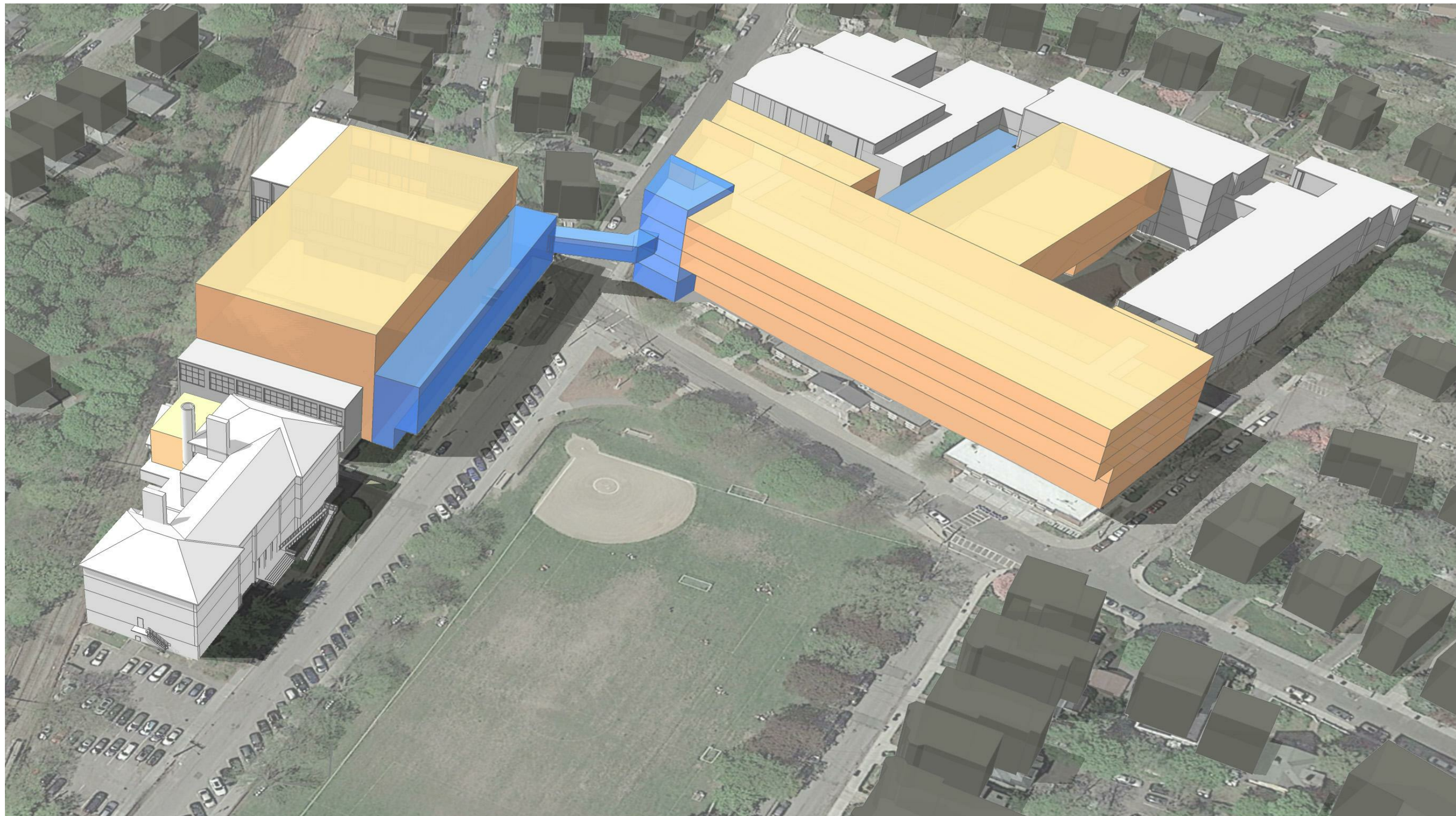
MA HS Standards - Option 2 - Fourth Floor - Program

Brookline High School Expansion Feasibility Study

Brookline, MA
13 March 2017



HMFH ARCHITECTS



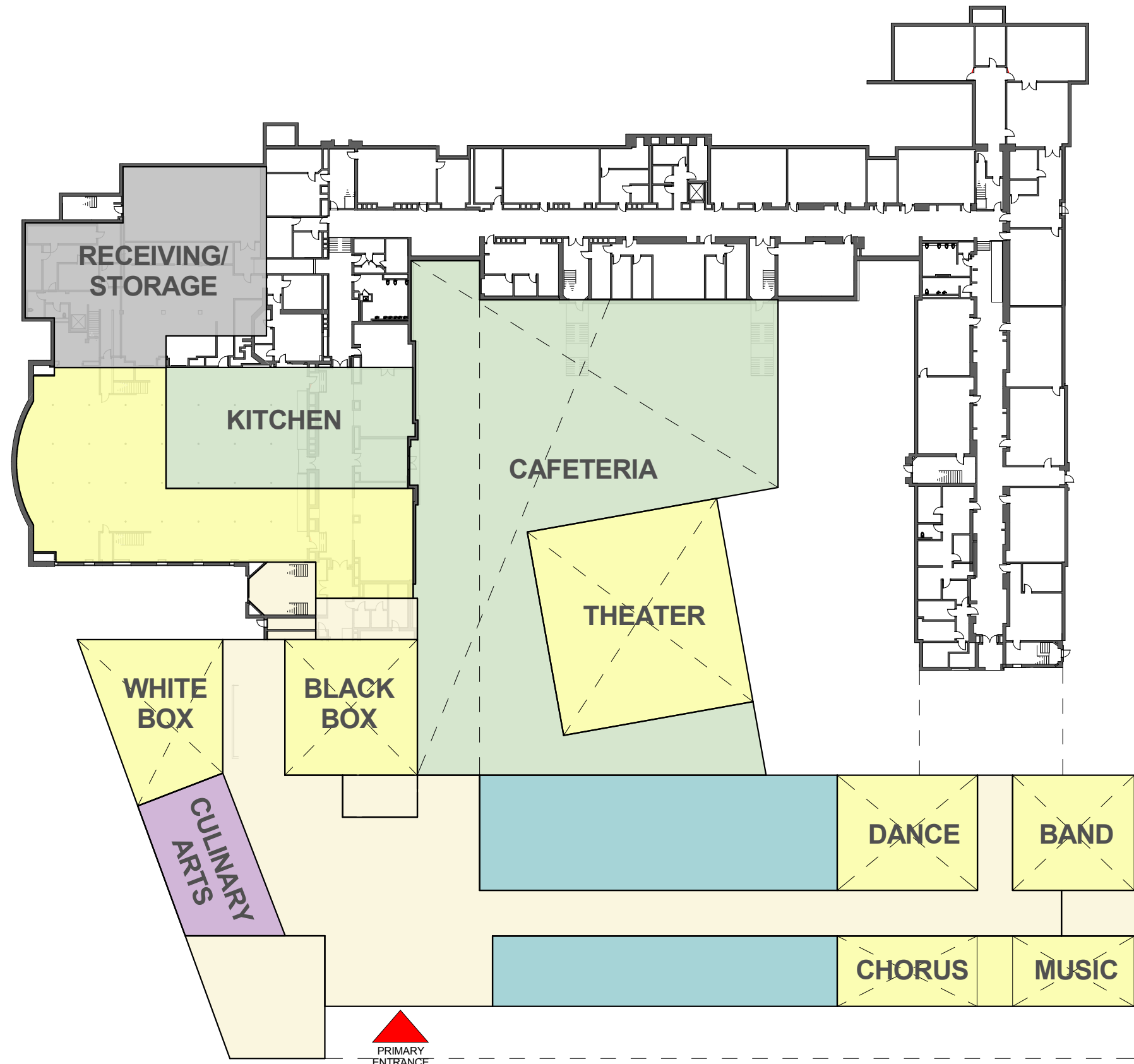
BHS Education Plan - Option 3 - Massing
Brookline High School Expansion Feasibility Study

Brookline, MA
13 March 2017

C:\Users\RPark\Documents\BHS_46 Tappan St_Unified
Arts_Central_2016_rpark.rvt

HM
FH

HMFH ARCHITECTS

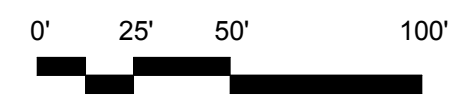
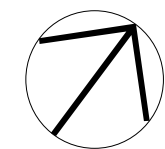


- Academic
- Science
- Administration
- Arts & Music
- Performance
- Collaborative
- Library
- Vocational

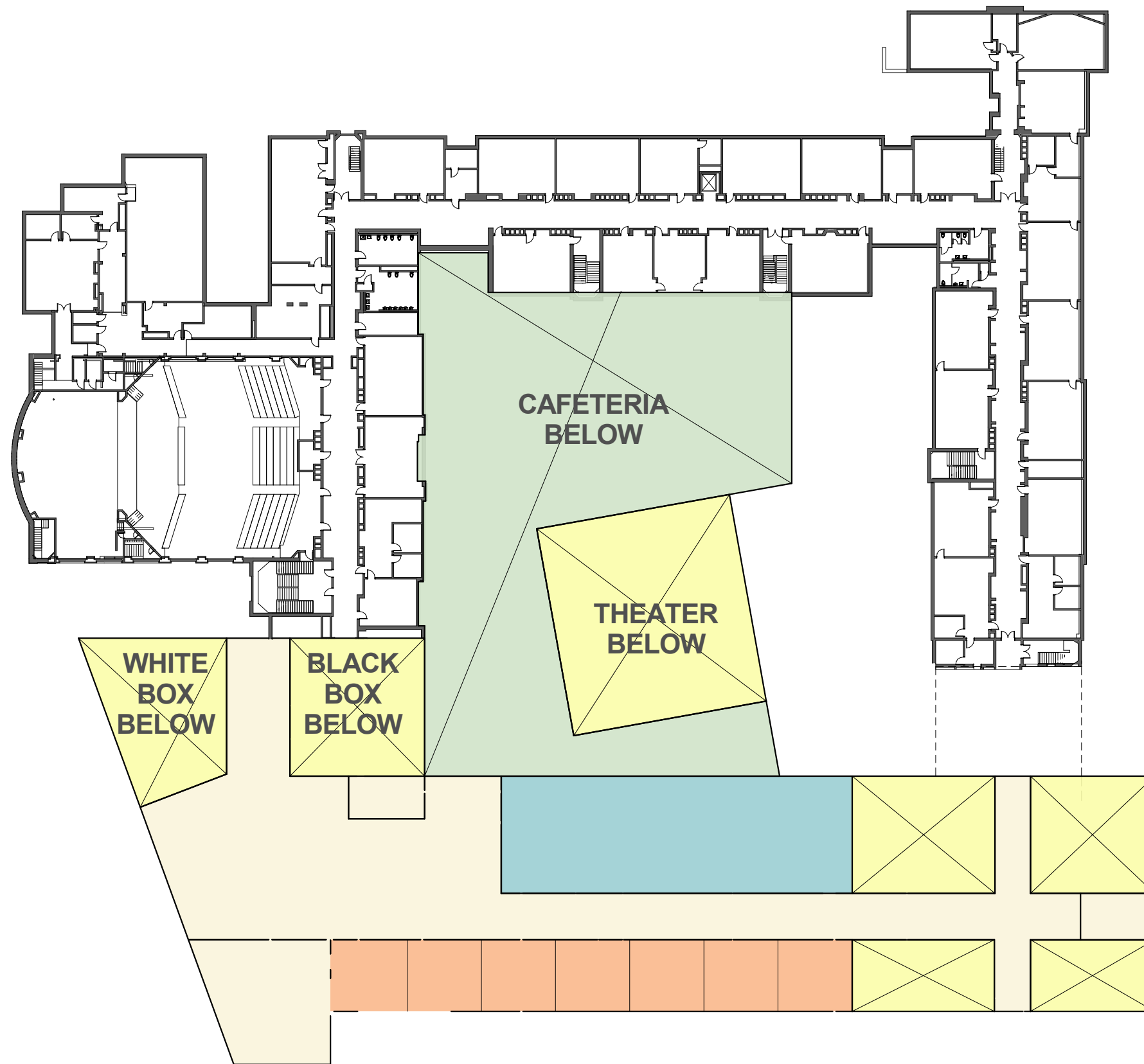
BHS Education Plan - Option 3 - First Floor Plan - Program

Brookline High School Expansion Feasibility Study

Brookline, MA
13 March 2017



HMFH ARCHITECTS

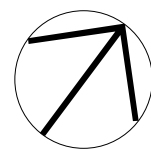


- Academic
- Science
- Administration
- Arts & Music
- Performance
- Collaborative
- Library
- Vocational

BHS Education Plan - Option 3 - Second Floor Plan - Program

Brookline High School Expansion Feasibility Study

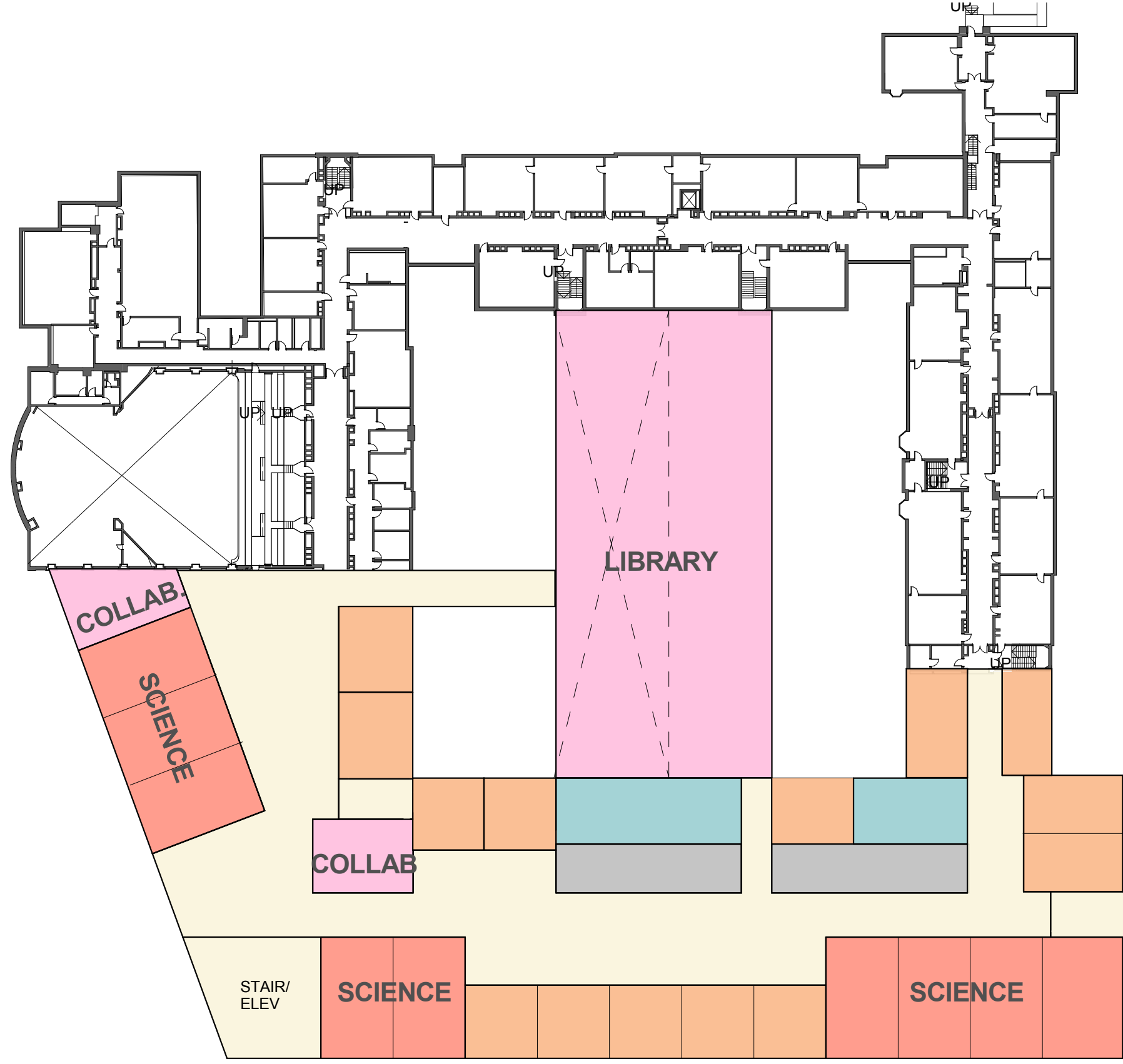
Brookline, MA
13 March 2017



0' 25' 50' 100'



HMFH ARCHITECTS

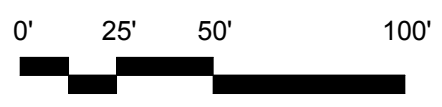
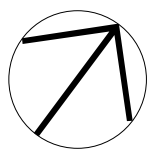


- Academic
- Science
- Administration
- Arts & Music
- Performance
- Collaborative
- Library
- Vocational

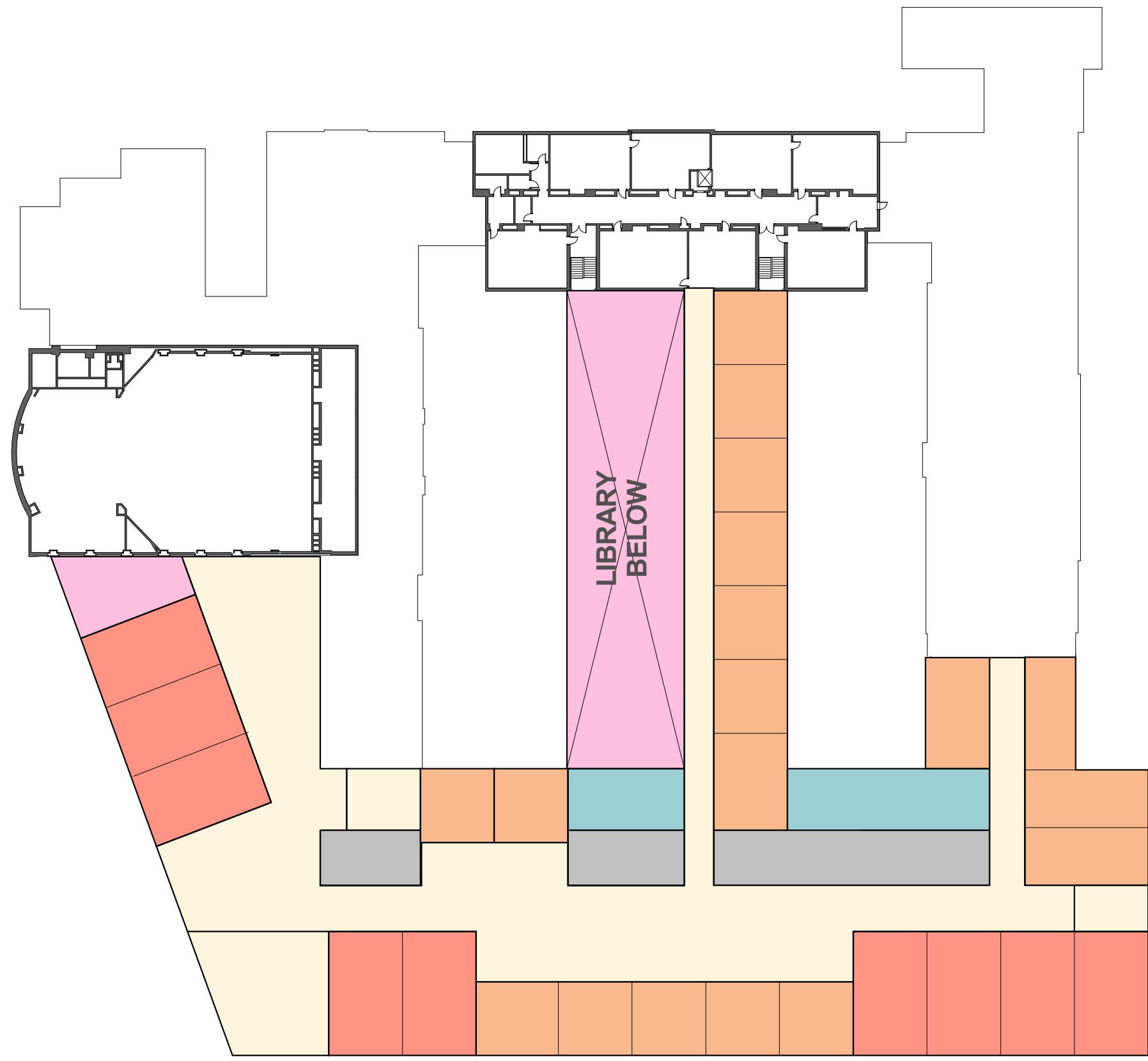
BHS Education Plan - Option 3 - Third Floor Plan - Program

Brookline High School Expansion Feasibility Study

Brookline, MA
13 March 2017



HMFH ARCHITECTS

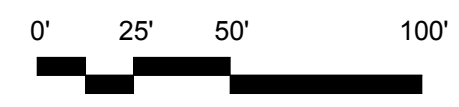
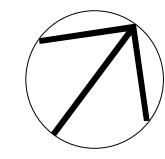


- Academic
- Science
- Administration
- Arts & Music
- Performance
- Collaborative
- Library
- Vocational

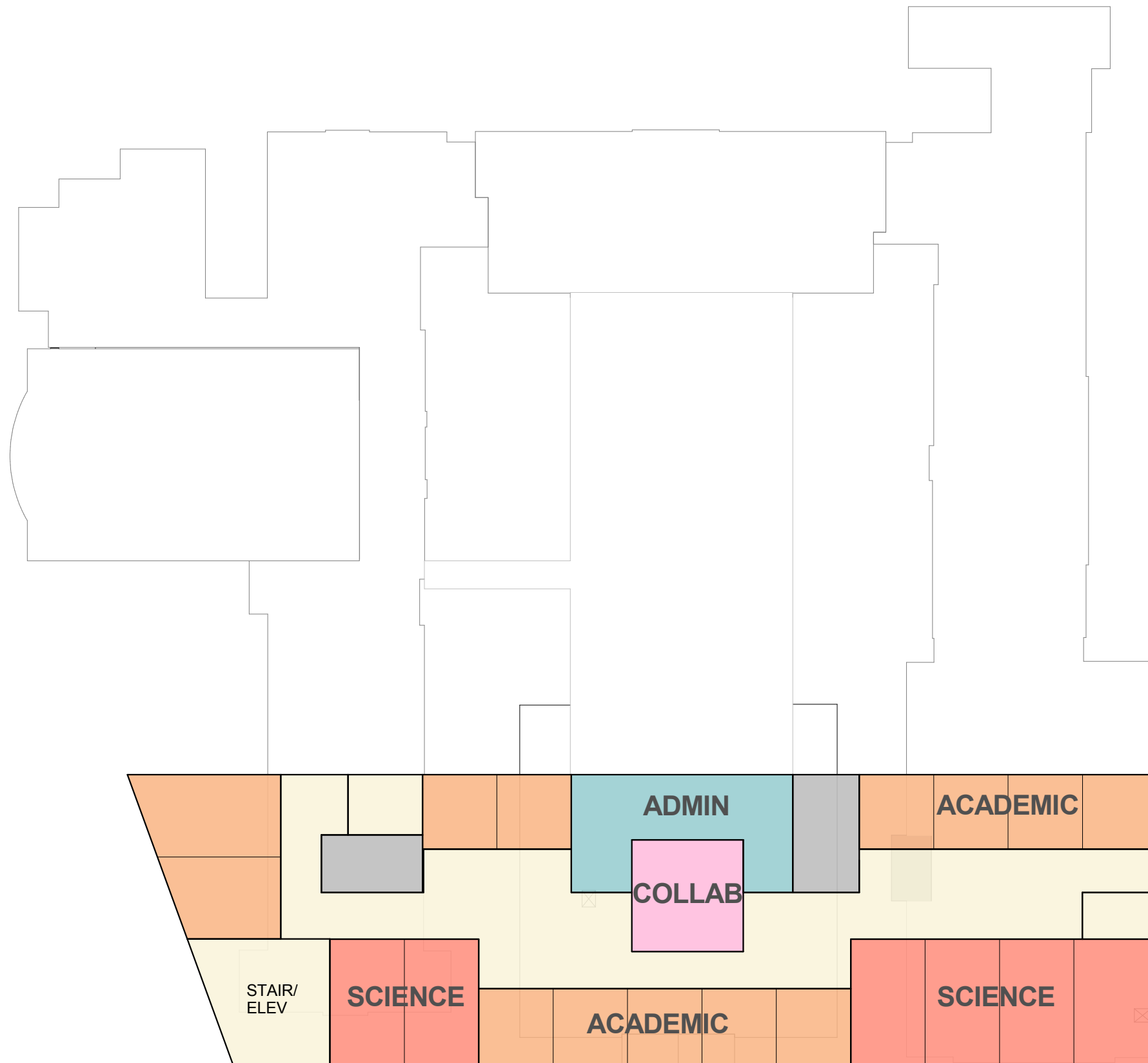
BHS Education Plan - Option 3 - Fourth Floor Plan - Program

Brookline High School Expansion Feasibility Study

Brookline, MA
13 March 2017



HMFH ARCHITECTS

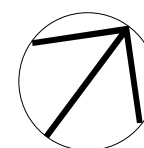


- Academic
- Science
- Administration
- Arts & Music
- Performance
- Collaborative
- Library
- Vocational

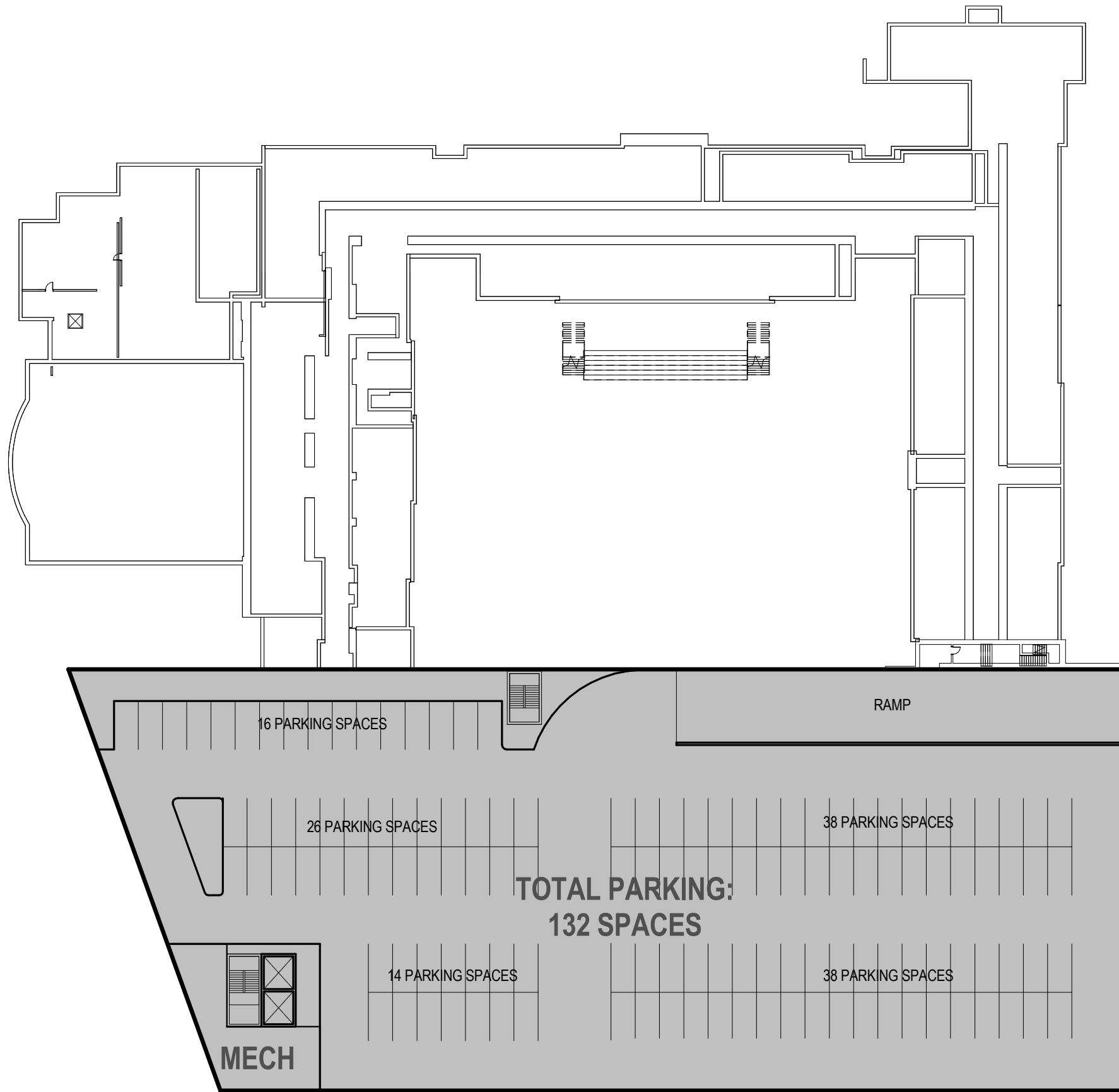
BHS Education Plan - Option 3 - Fifth Floor Plan - Program

Brookline High School Expansion Feasibility Study

Brookline, MA
13 March 2017



HMFH ARCHITECTS

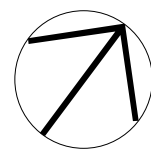


BHS Education Plan - Option 3 - Basement Plan - Program

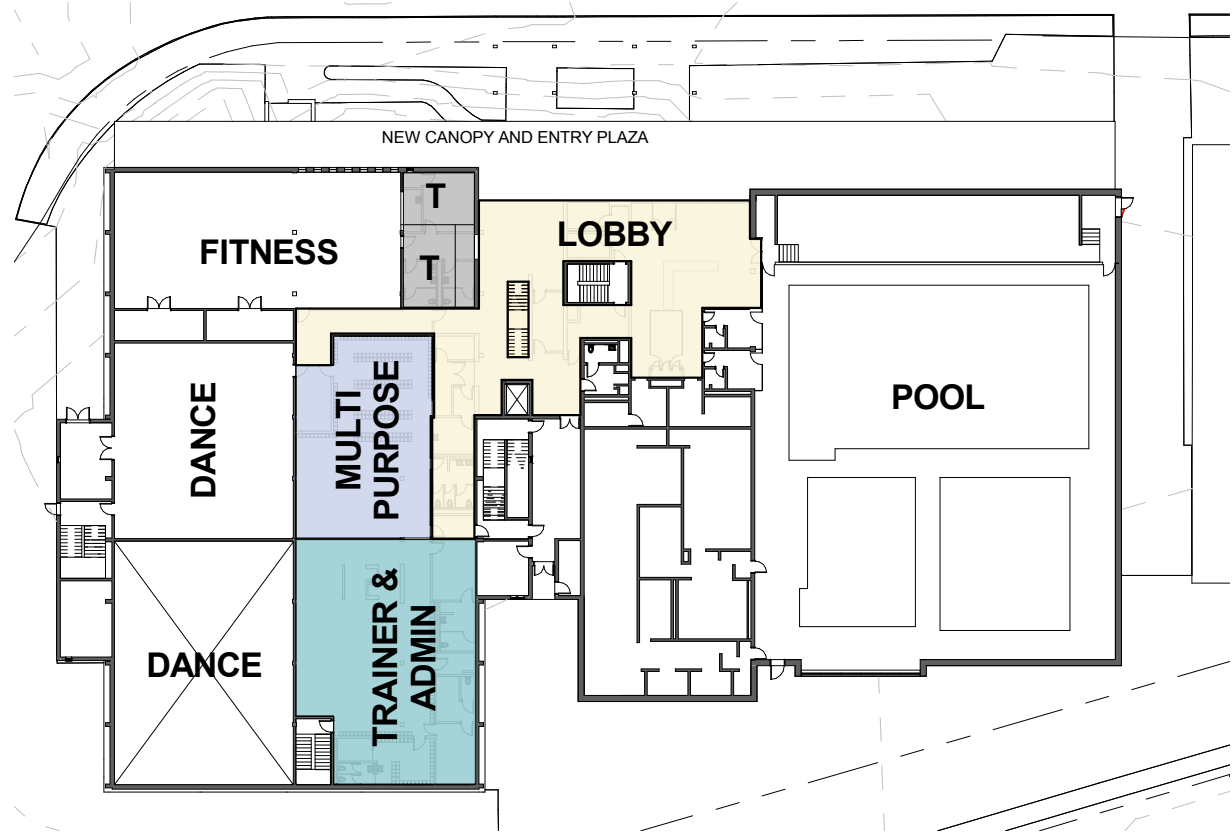
Brookline High School Expansion Feasibility Study

Brookline, MA

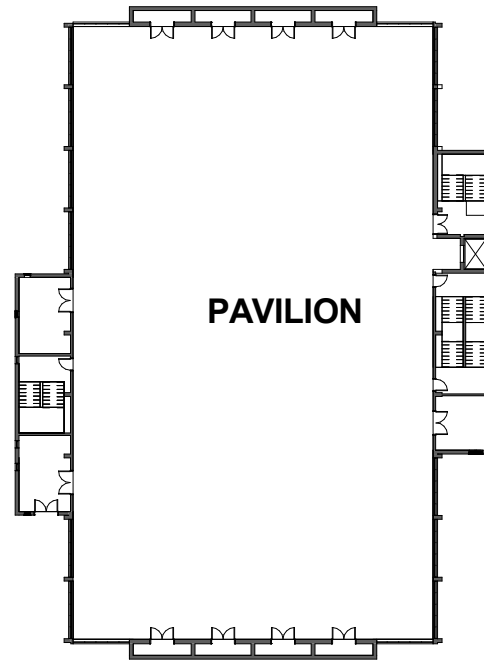
13 March 2017



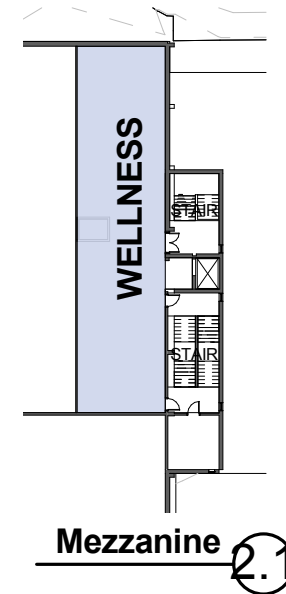
HMFH ARCHITECTS



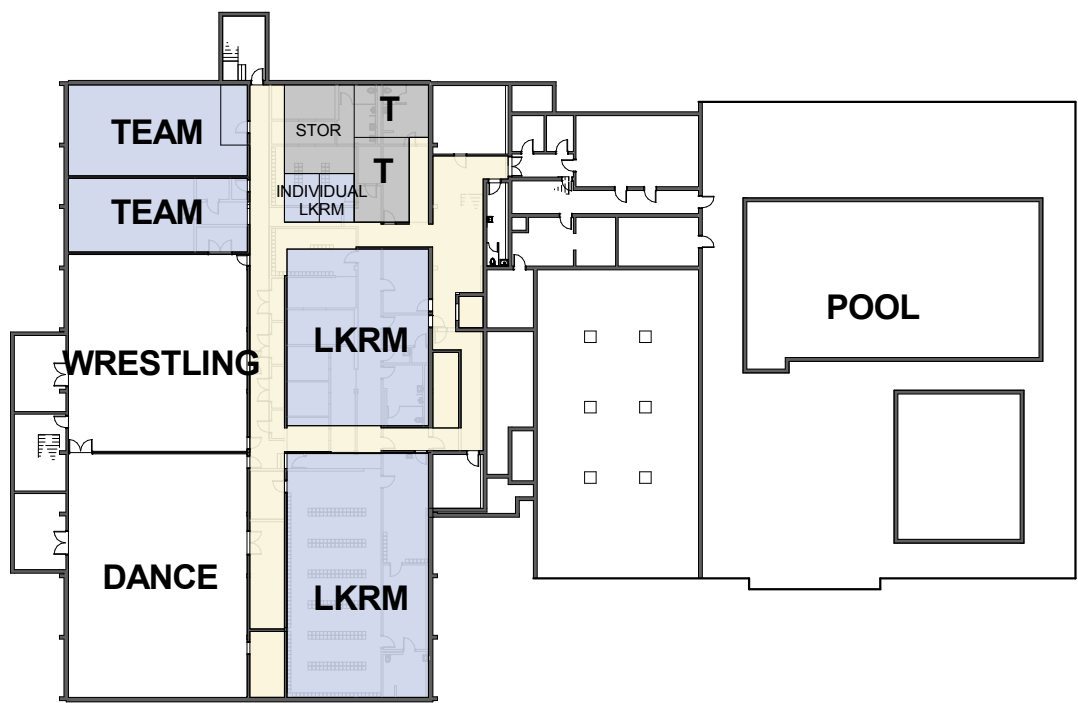
1.0 FIRST FLOOR ①



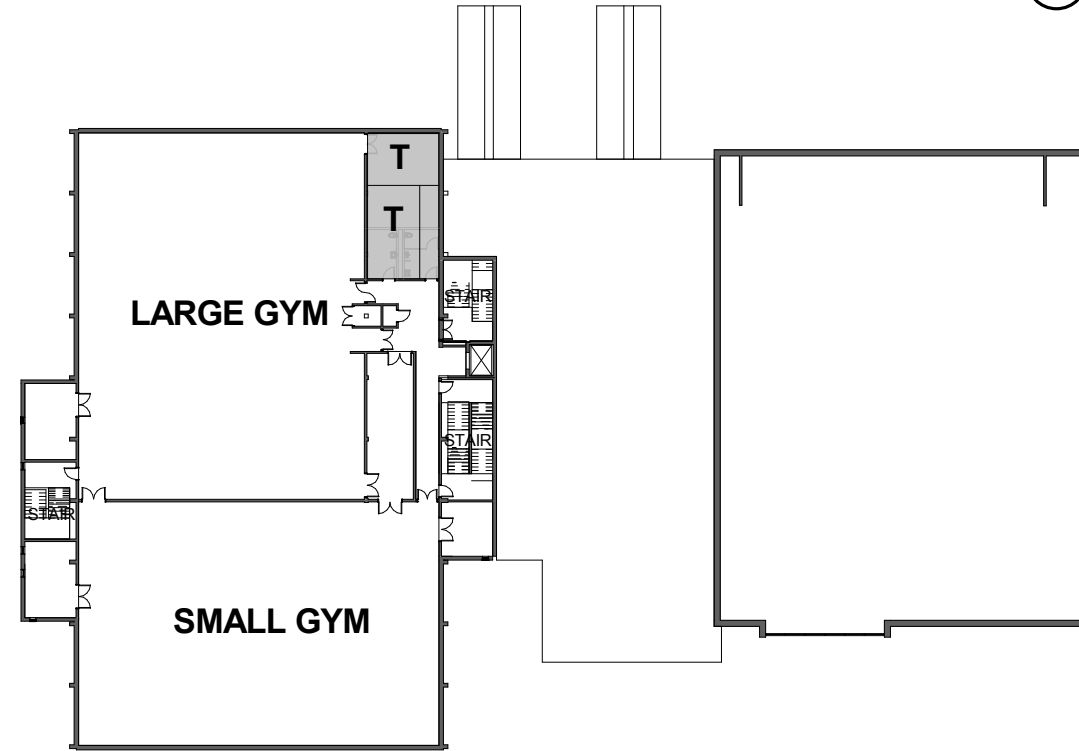
2.0 SECOND FLOOR ②



- Academic
- Science
- Administration
- Arts & Music
- Performance
- Collaborative
- Library
- Vocational

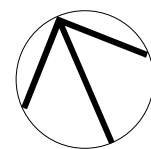


0.0 BASEMENT ③



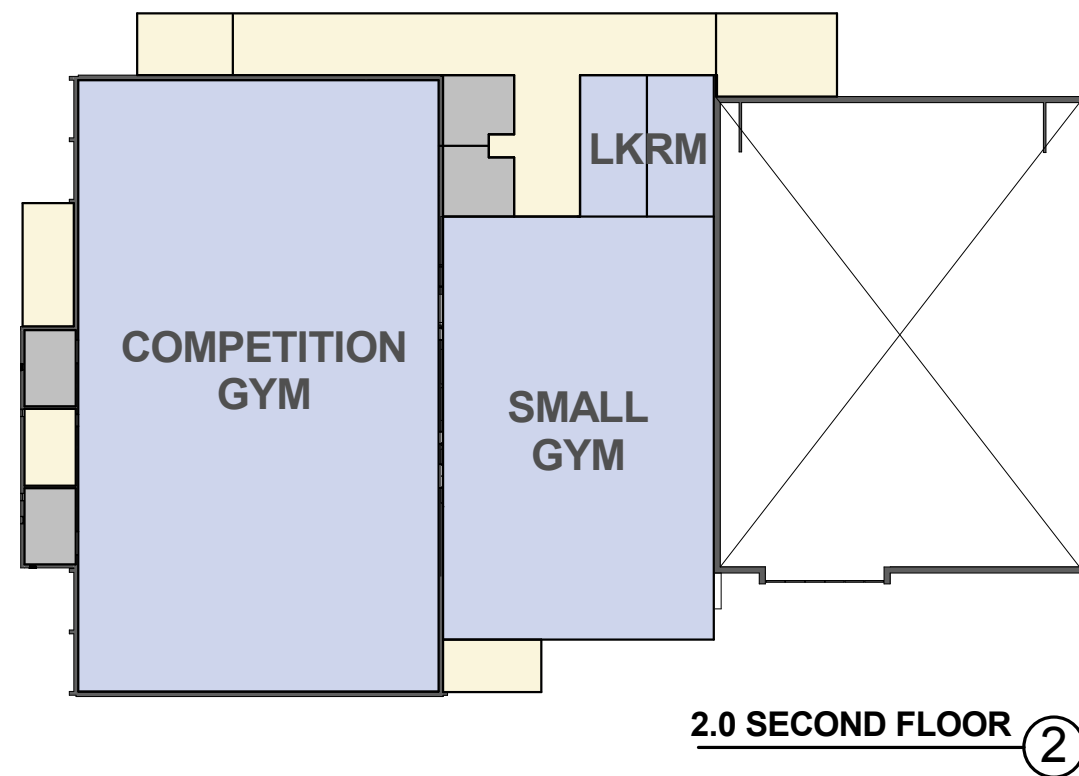
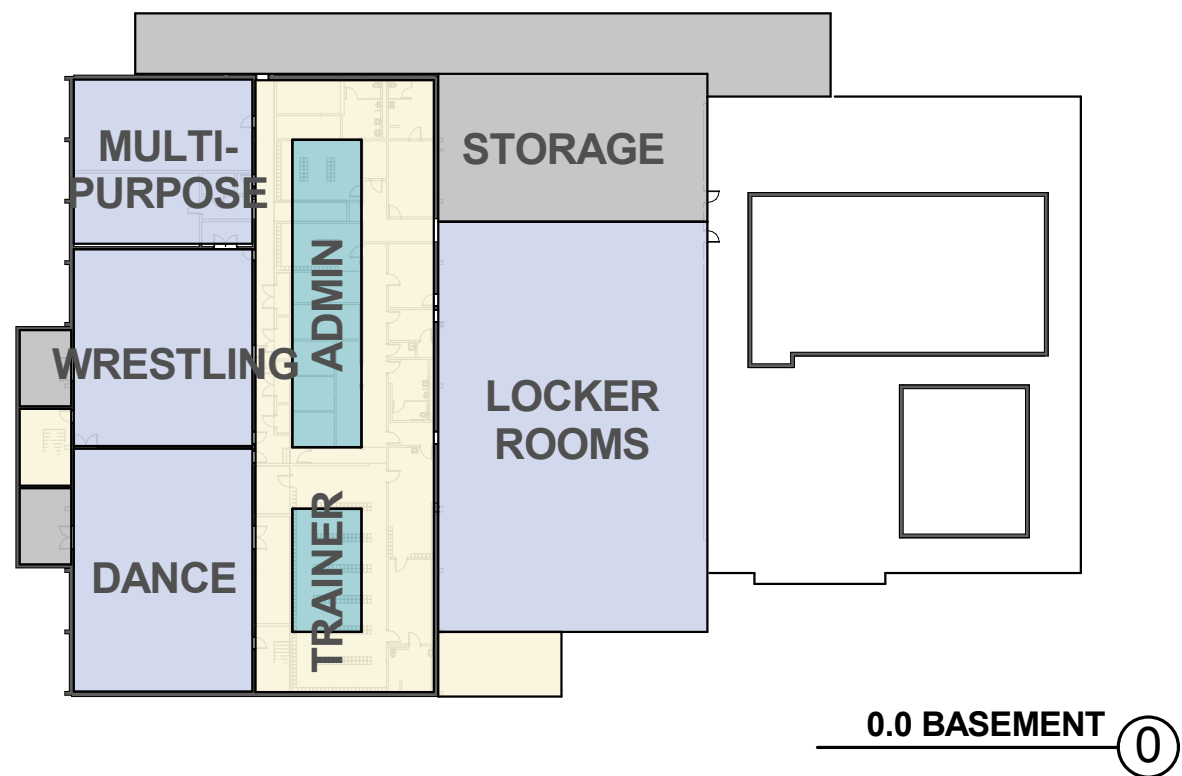
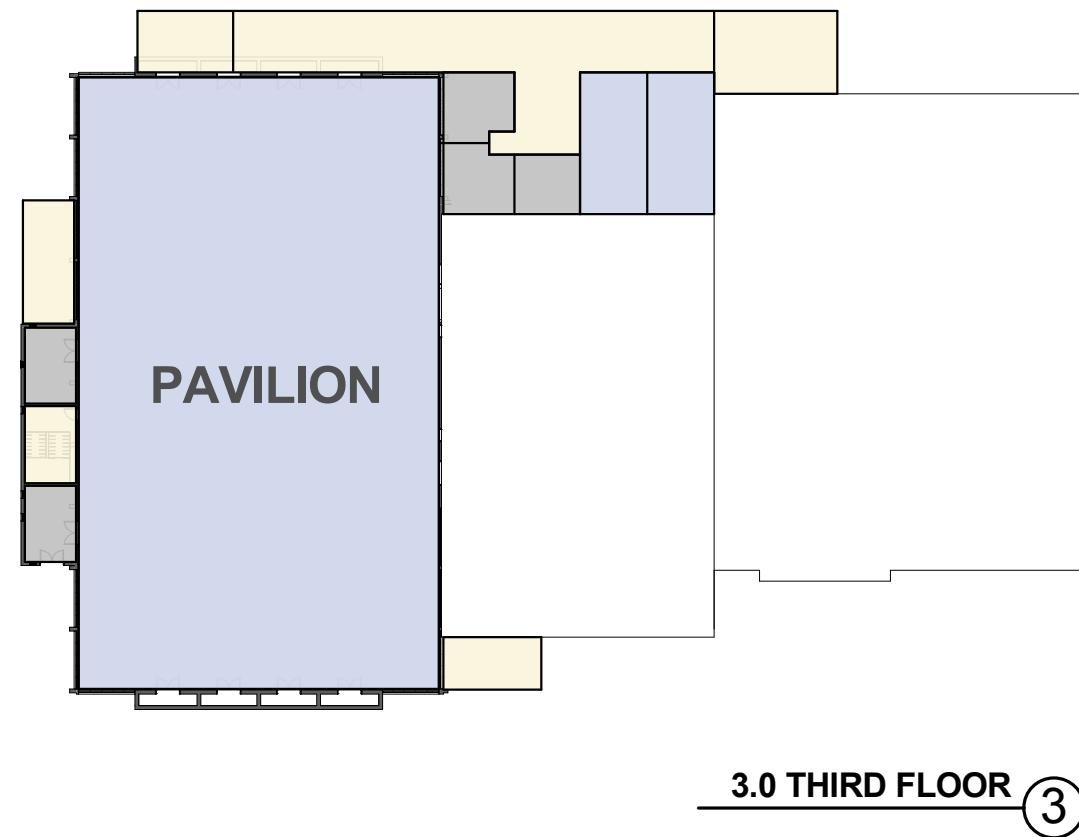
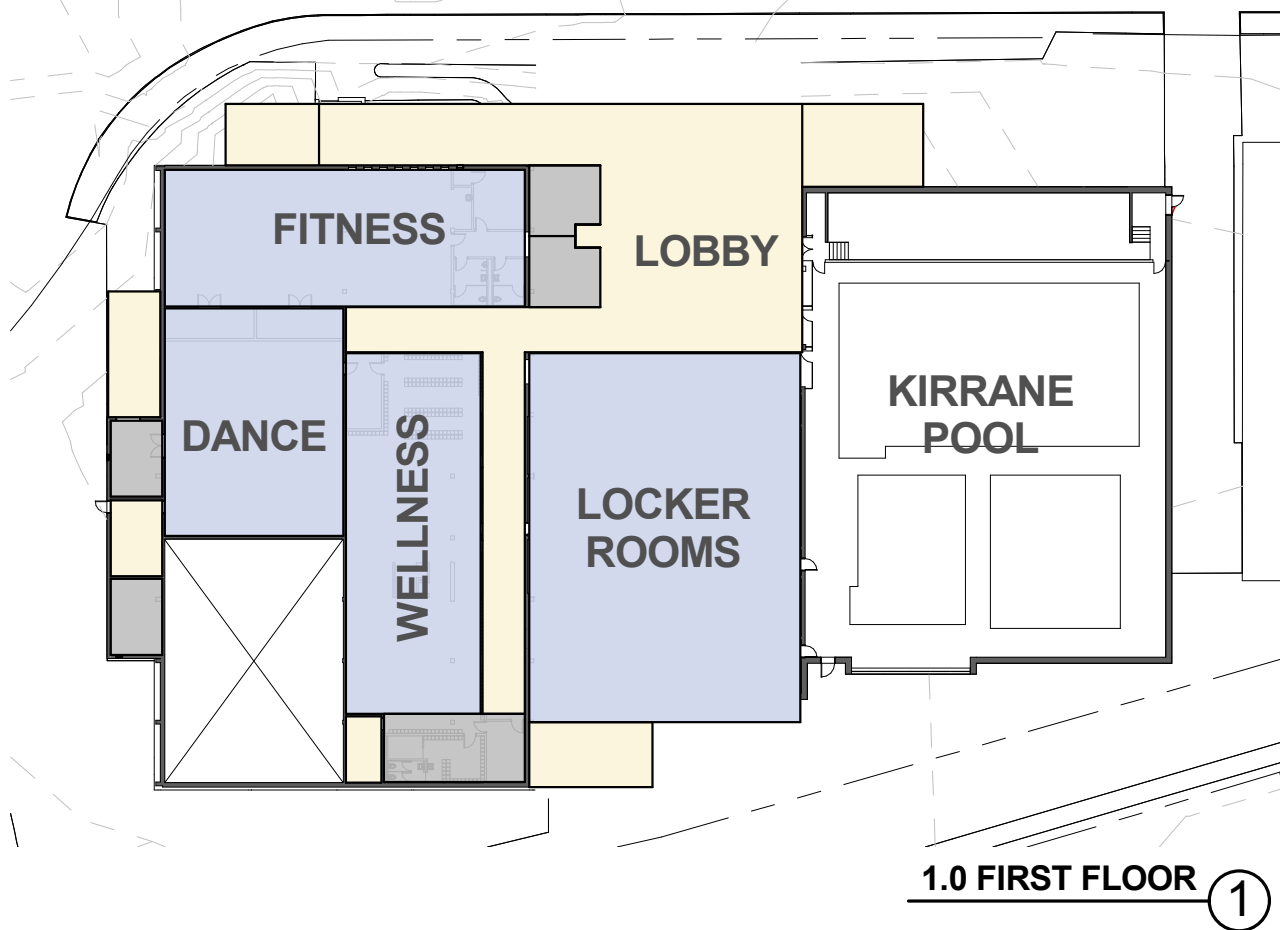
3.0 THIRD FLOOR ④

Tappan Gym - Option 1 - Enrollment Accomodation
 Brookline High School Expansion Feasibility Study
 Brookline, MA



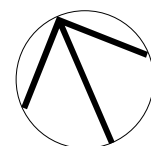
H M
F H

HMFH ARCHITECTS



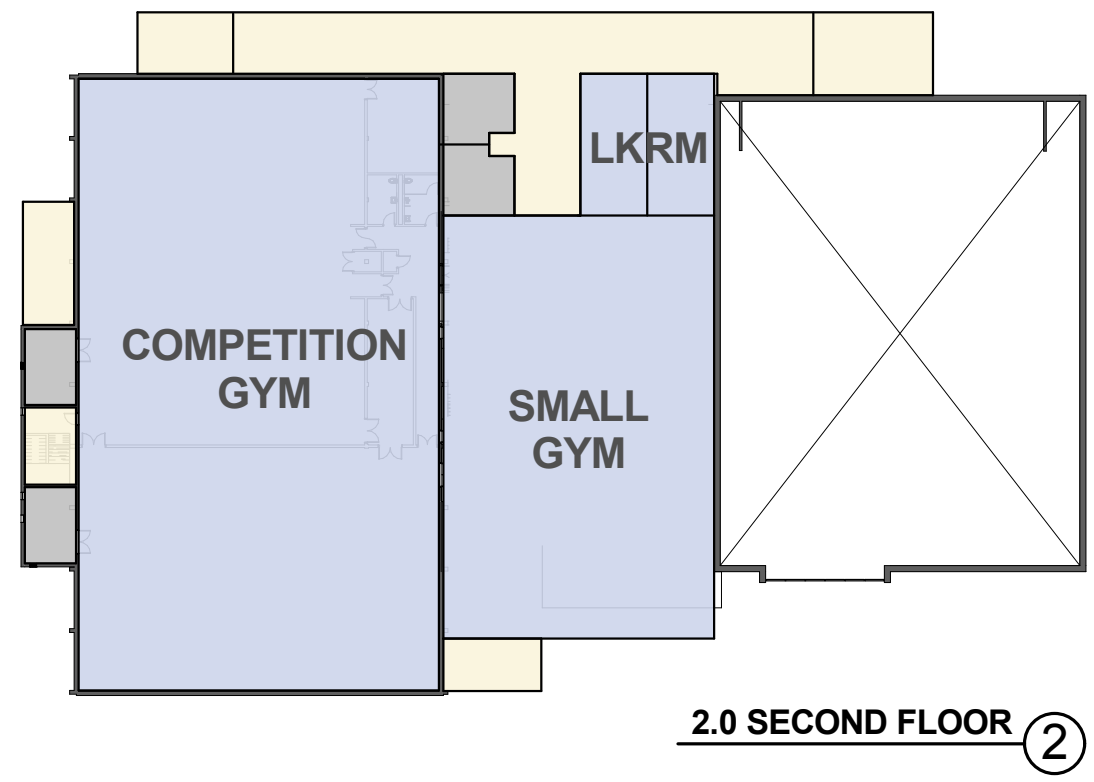
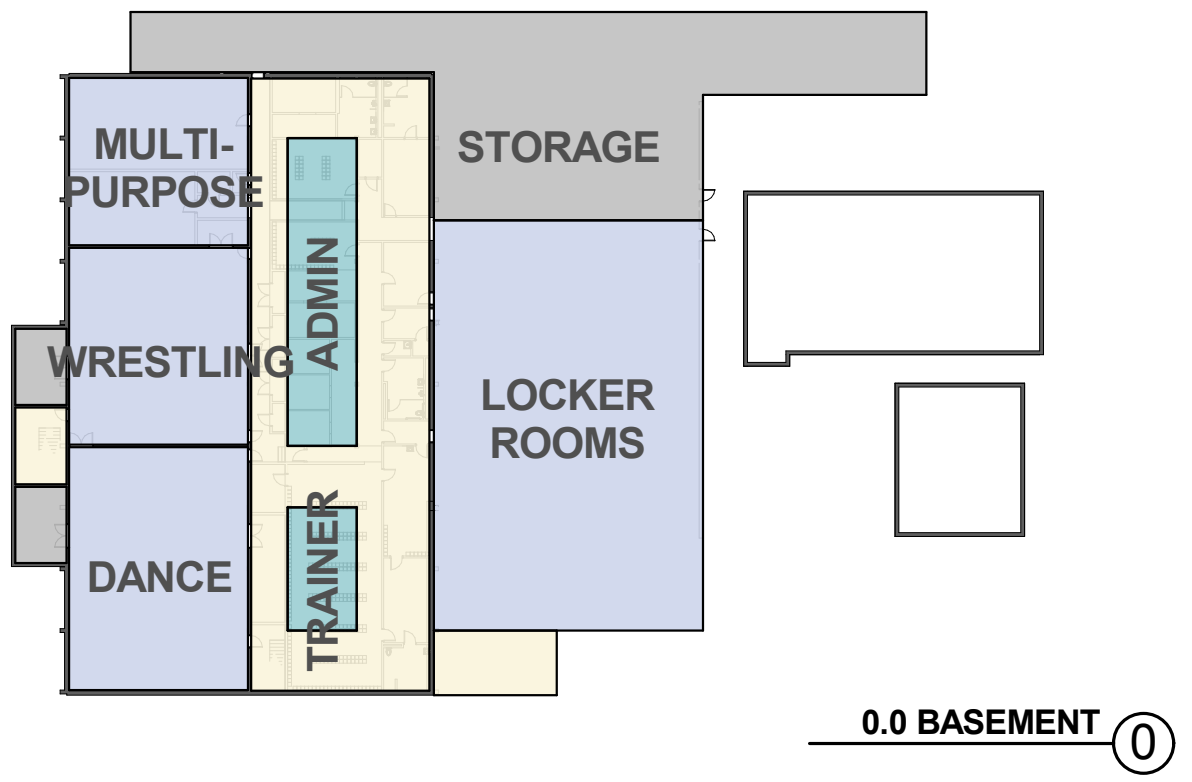
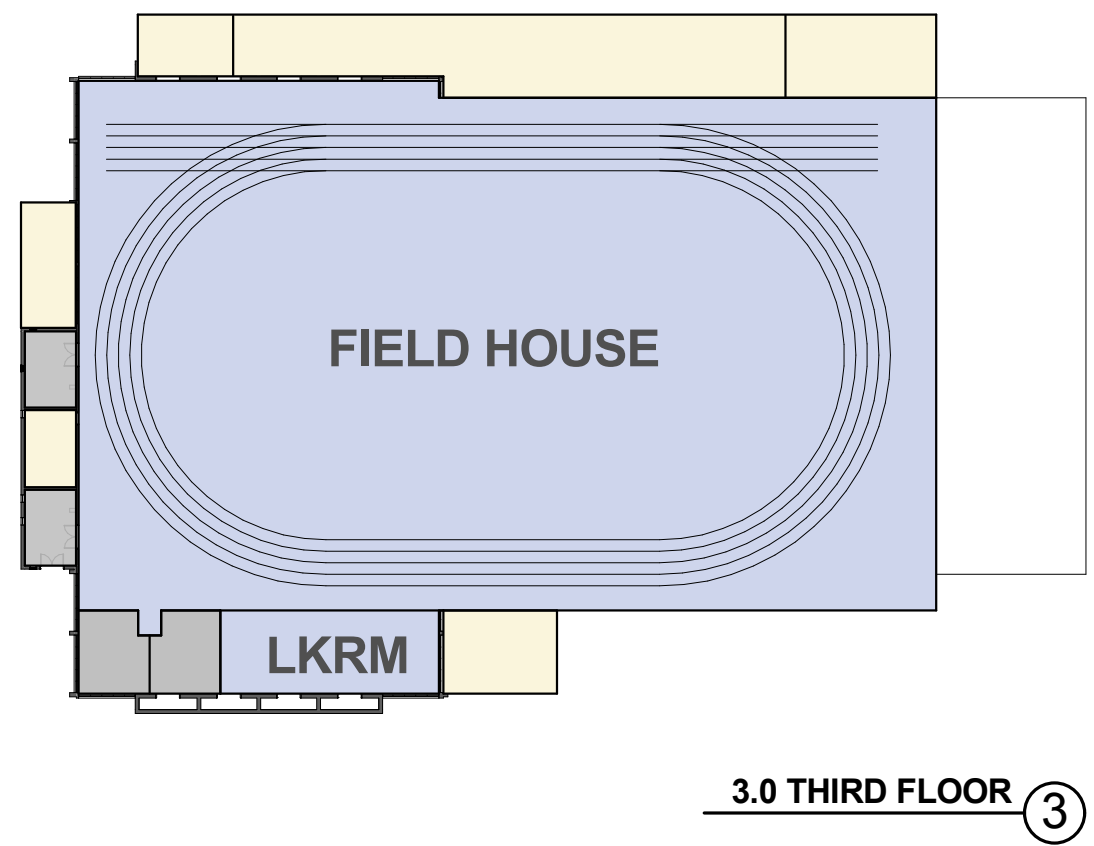
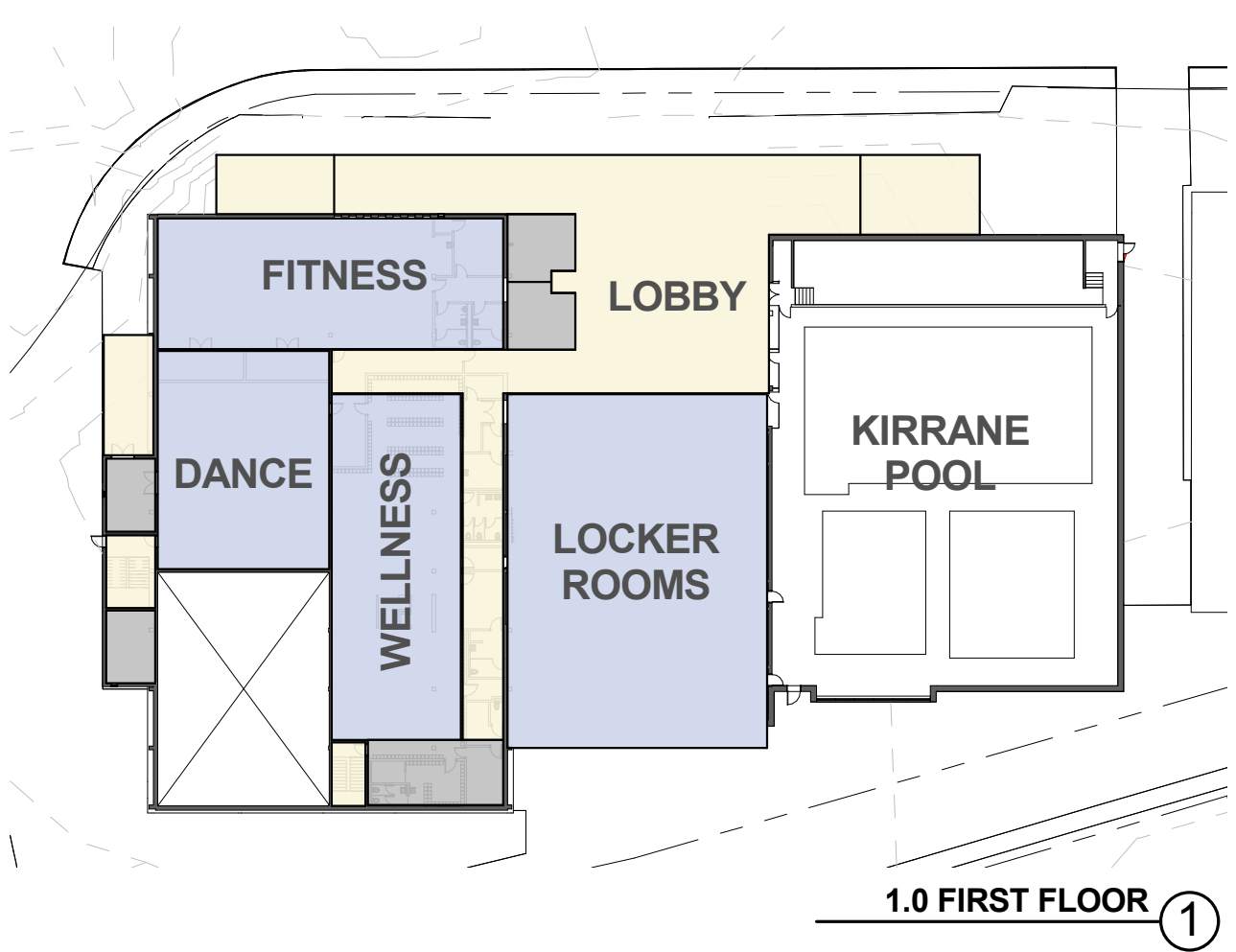
- Academic
- Science
- Administration
- Arts & Music
- Performance
- Collaborative
- Library
- Vocational

Tappan Gym - Option 2 - MA Standards
Brookline High School Expansion Feasibility Study
 Brookline, MA



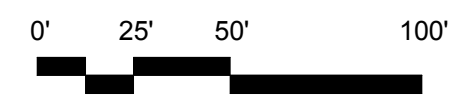
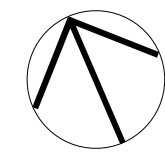
H M
F H

HMFH ARCHITECTS



- Academic
- Science
- Administration
- Arts & Music
- Performance
- Collaborative
- Library
- Vocational

Tappan Gym - Option 3 - Education Plan
 Brookline High School Expansion Feasibility Study
 Brookline, MA



HMFH ARCHITECTS

CYPRESS PARK	
CFP OPTION 01: PARKING GARAGE	
PARK PAVILIONS with Stairs/ Elevator/ Paystation/ Maintenance Storage	= 3,000 gsf
95 CARS @ (1) LEVEL	= 46,600 actual gsf (53,400 estimated gsf)
190 CARS @ (2) LEVELS	= 93,200 gsf (103,400 estimated gsf)
285 CARS @ (3) LEVELS	= 139,800 gsf (153,400 estimated gsf)



Cypress Park Site Plan - Below Grade Parking
 Brookline High School
 Brookline, MA
 09 March 2017

HM FH HMFH ARCHITECTS



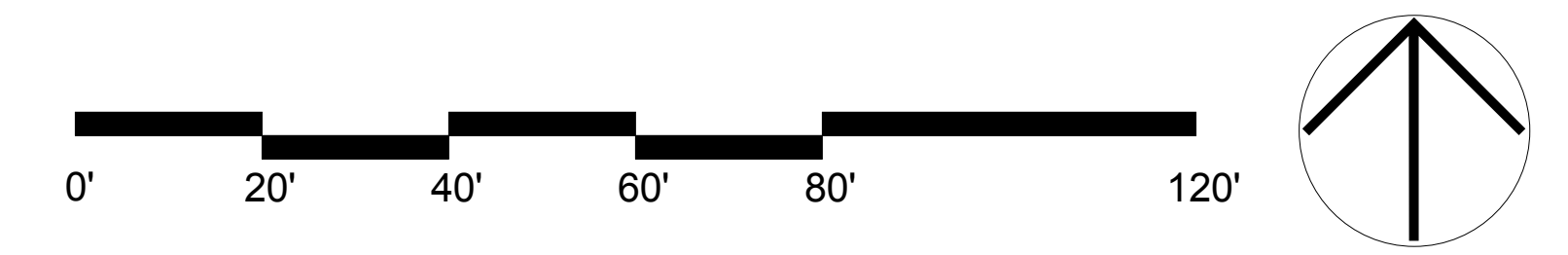
Cypress Park Site Plan - Opt.1

Brookline High School

Brookline, MA

09 March 2017

HM
FH HMFH ARCHITECTS





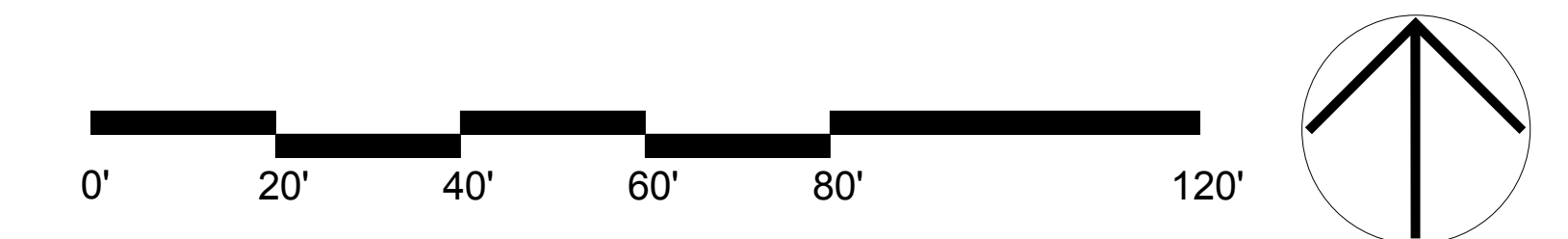
Cypress Park Site Plan - Opt.2

Brookline High School

Brookline, MA

09 March 2017

HM
FH HMFH ARCHITECTS





Cypress Park Site Plan - Opt.3
 Brookline High School
 Brookline, MA
 09 March 2017

HM
FH HMFH ARCHITECTS

